

CLAPET CHECK VALVE

DN 08 à 50

PN 80

Un montage vertical est préconisé sur un écoulement ascendant.
Marquage directionnel sur le corps.
Dans le cas d'un montage horizontal, la différence de pression minimum aval/amont pour assurer l'étanchéité est de 1 bar.

Sur demande :

Version ATEX II2GD
Version dégraissée pour application oxygène
Version cryogénique
Version 304L / 904L (UB6) / Alloy 22
Marquage π suivant la directive 2010/35/UE
TPED : certification ADR § 1.8.7.6

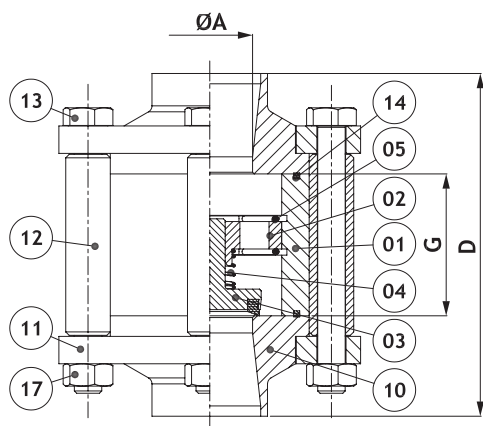
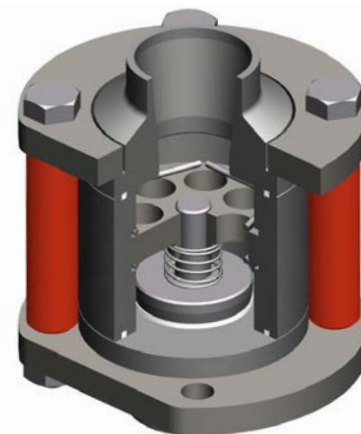
Size 1/4" to 2"

PN 80

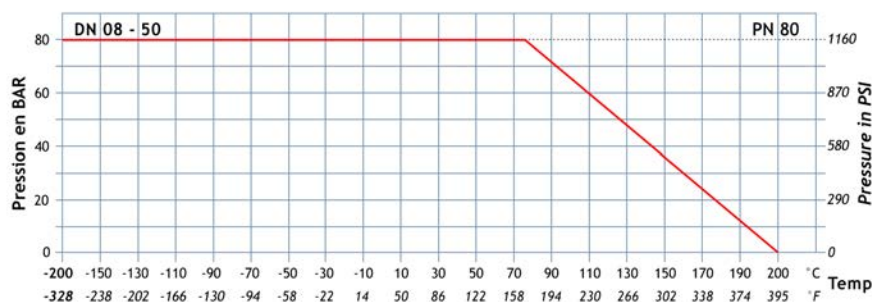
Vertical mounting is advised on an upward flow.
Arrow marked on the body.
In case of an horizontal mounting, the pressure difference between downstream and upstream to ensure sealing should be at least 1 bar.

On request:

ATEX II2GD
Degreased version for oxygen application
Cryogenics applications
Alloy 22 / 304L / 904L version
 π marking according to 2010/35/UE TPED: certification ADR §1.8.7.6



Pression de décollement 0.4 à 0.6 bar Opening pressure 6 to 9 psi



N°	Nb	Description	Matière (EN)
01	1	Corps	1.4404
02	1	Guide de clapet	1.4404
03	1	Disque	1.4404 + PTFE
04	1	Ressort de clapet	1.4401
05	2	Jonc CERCLAM	1.4401
10	2	Embouts libres	1.4404
11	2	Brides tournantes	1.4307
12	4	Entretoises	PTFE
13	4	Vis TH	1.4301
14	2	Joints de corps	PTFE
17	4	Écrous de serrage	1.4301

Item	Qty	Description	Material (ASTM)
01	1	Body	316L
02	1	Plate guide	316L
03	1	Disc	316L + PTFE
04	1	Spring	316
05	2	Circlip CERCLAM	316
10	2	Loose end	316L
11	2	Body flange	304L
12	4	Distance piece	PTFE
13	4	Screw TH	304
14	2	Body seal	PTFE
17	4	Nut screw	304

Nominal	DN / Size			PN	Ø A	D	G
	N	V					
	Full	Standard	Reduced				
08-12	1/4"-3/8"	15	1/2"	80	11	65	20.4
15	1/2"	20	3/4"	80	14.2	70	24.4
20	3/4"	25	1"	80	21	85	31.6
25	1"	32	1"1/4"	80	25	100	41.4
32	1"1/4"	40	1"1/2"	80	32	110	48.2
40	1"1/2"	50	2"	80	38	125	56.2
50	2"	65	2"1/2"	80	50	150	71.0

APP

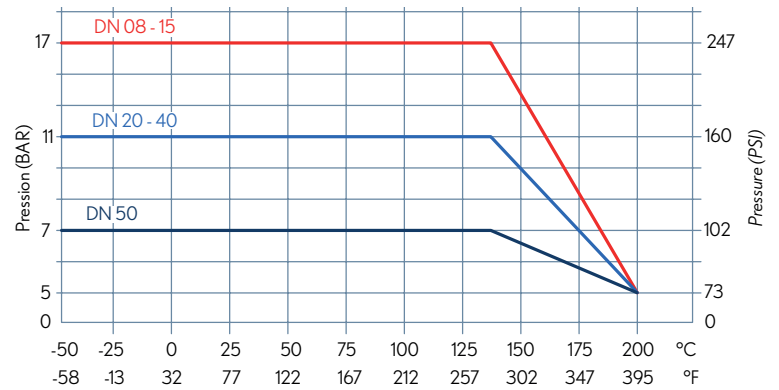
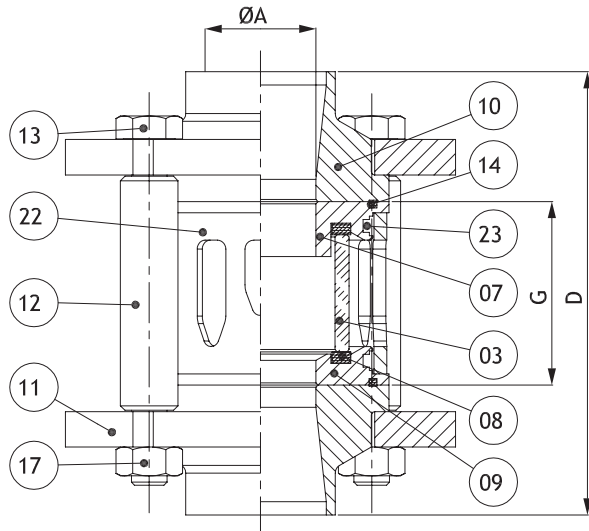
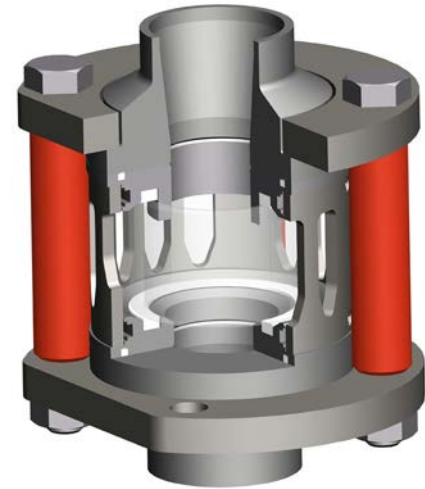
VERSEUR
SIGHT GLASS

DN 08 à 50

Cartouche précontrainte
Protection du tube en verre
(pare-éclats en acier inoxydable)
Anti-gouttes évitant les projections sur la paroi
Autre matériaux sur demande

Size 1/4" to 2"

Pre-stressed cartridge
Efficient glass protection
(glass protector in stainless steel)
Drip avoiding the projection of drops on the walls
Others materials on request



Nominal	DN / Size			PN	Ø A	D	G	PS bars
	N	V						
	Full	Standard	Reduced					
08-12	1/4"-3/8"	15	1/2"	17	10.5	65	20.4	17
15	1/2"	20	3/4"	17	14	70	24.4	17
20	3/4"	25	1"	11	19	85	31.6	11
25	1"	32	1"1/4	11	25	100	41.4	11
32	1"1/4	40	1"1/2	12	32	110	48.2	12
40	1"1/2	50	2"	11	38	125	56.2	11
50	2"	65	2"1/2	7.5	50	150	71.0	7.5

N°	Nb	Description	Matière (EN)
03	1	Verre	PYREX
07	1	Flasque supérieur	1.4404
08	2	Joint de verre	PTFE Microcellulaire
09	1	Flasque inférieur	1.4404
10	2	Embouts libres	1.4404
11	2	Brides tournantes	1.4307
12	4	Entretoises	PTFE
13	4	Vis TH	1.4301
14	2	Joints de corps	PTFE
17	4	Écrous de serrage	1.4301
22	1	Pare éclats	1.4404
23	8	Vis HC	1.4301

Item	Qty	Description	Material (ASTM)
03	1	Glass	PYREX
07	1	Seal holder	316L
08	2	Glasseal	Microcellular PTFE
09	1	Upper seal holder	316L
10	2	Loose end	316L
11	2	Body flange	304L
12	4	Distance piece	PTFE
13	4	Screw TH	304
14	2	Body seal	PTFE
17	4	Nut screw	304
22	1	Protector	316L
23	8	Screw HC	304

FILTRE FILTER

DN 08 à 50

Seuil de filtration

0.45 mm pour DN 10 à 20

0.8 mm pour DN 25 à 50

Autres seuils de filtration sur demande.

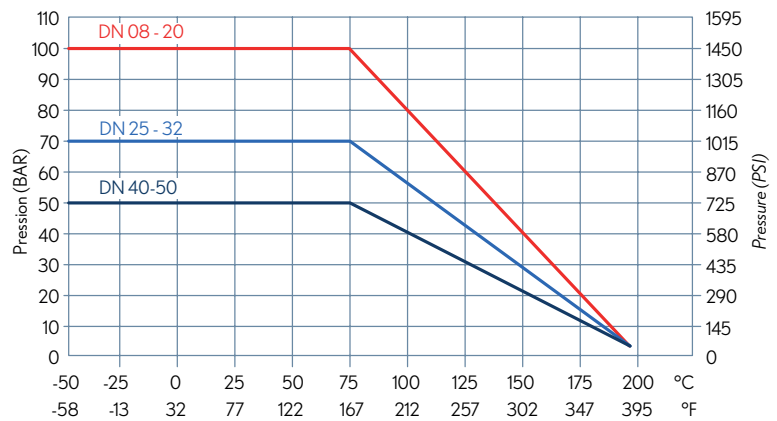
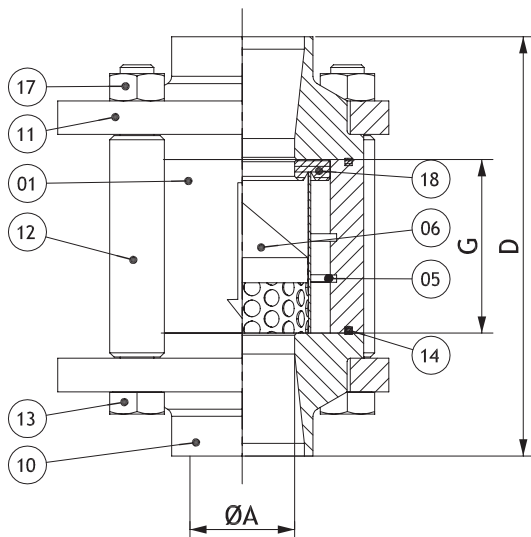
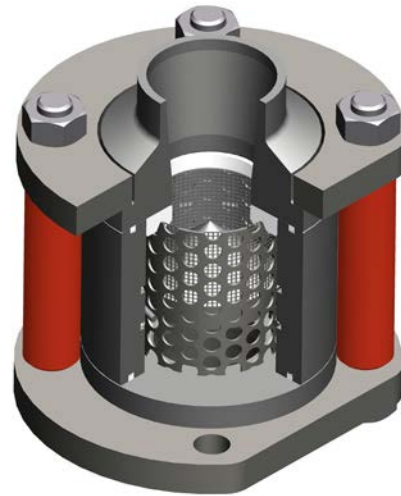
Size 1/4" to 2"

Filtering grade

0.45mm for size 1/4" to 3/4"

0.8mm for size 1" to 2"

Other filtering grade on request.



Nominal	DN			PN	ØA	D	G
	N	V					
08-12	1/4"-3/8"	15	1/2"	100	11.1	65	20.4
15	1/2"	20	3/4"	100	14	70	24.4
20	3/4"	25	1"	100	19	85	31.6
25	1"	32	1"1/4	70	25	100	41.4
32	1"1/4	40	1"1/2	70	32	110	48.2
40	1"1/2	50	2"	50	38	125	56.2
50	2"	65	2"1/2	50	50	150	71.0

N°	Nb	Description	Matière (EN) Inox
01	1	Corps	1.4404
05	1	Jonc CERCLAM	1.4401
06	1	Cartouche filtrante DN10 à 20 : 0.45 mm DN25 à 50 : 0.80 mm	1.4404
10	2	Embouts libres	1.4404
11	2	Brides tournantes	1.4307
12	4	Entretoises	PTFE
13	4	Vis TH	1.4301
14	2	Joints de corps	PTFE
17	4	Écrous de serrage	1.4301
18	1	Joint de cartouche	PTFE

Item	Qty	Description	Material (ASTM) S.steel
01	1	Body	316L
05	1	Circlip CERCLAM	316L
06	1	Filter element DN10 à 20 : 0.45 mm DN25 à 50 : 0.80 mm	316L
10	2	Loose end	316L
11	2	Body flange	304L
12	4	Distance piece	PTFE
13	4	Screw TH	304
14	2	Body seal	PTFE
17	4	Nut screw	304
18	1	Filter seal	PTFE