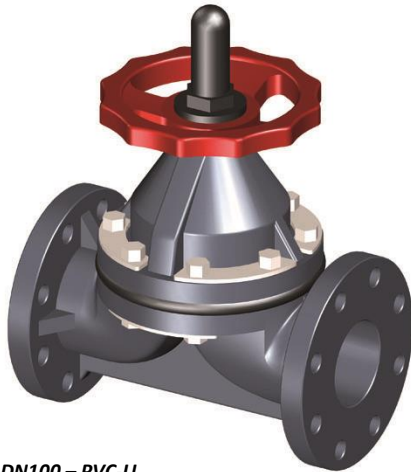


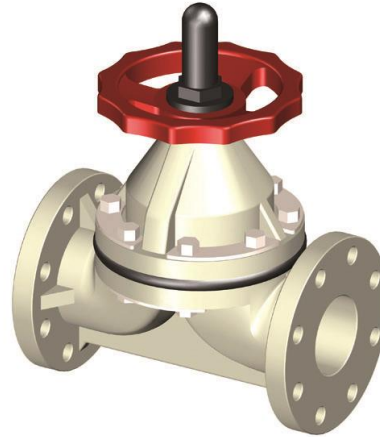
DIAPHRAGM VALVE – FLANGED – DN65 (2"1/2) to DN250 (10")

PVC-U, PP-H, PVDF

Conform to the 2014/68/EU Directive



DN100 – PVC-U



DN80 – PP-H

MAIN FEATURES

- Diaphragm in EPDM, FPM, or PTFE.
- Visual Position Indicator
- The design of diaphragm valves does not allow operation under vacuum

Les descriptions et caractéristiques figurant sur ce document sont données uniquement à titre d'information et non d'engagement contractuel. SAFI se réserve le droit d'effectuer sans préavis, toute modification.

SAFI has a policy of continuously developing its product range and the above data is subject to change without prior notification.

Die Beschreibungen und Daten, die sich auf diesem Dokument befinden, sind rein informativ und unverbindlich. SAFI behält sich vor, ohne Vorankündigung Änderungen vorzunehmen, die als technisch notwendig erachtet werden.

Las descripciones y características que figuran en este documento son indicativas. En ningún caso son contractuales. SAFI se reserva el derecho sin previo aviso de efectuar cualquier modificación.

SAFI

Av. Jacques Moison – BP 1
26770 TAULIGNAN
FRANCE
Tél.: (+33) 4 75 53 56 29
Fax : (+33) 4 75 53 62 78
info@safi-valves.com

SAFI Limited

35 Holton Road
Holton Heath Trading Park
POOLE Dorset - BH16 6LT
UNITED KINGDOM
Tél.: (+44) 1202 624618
Fax : (+44) 1202 628500
sales@safi-valves.com

SAFI Deutschland

Kunststoffarmaturen
Vertriebs GmbH
Jahnstrasse 29
64319 PFUNGSTADT
DEUTSCHLAND
Tél. : (+49) 61 57 81 919
Fax : (+49) 61 57 82 025
info-deutschland@safi-valves.com

SAFI Fabrica de Valvulas

C/ Carboners, 35
Pol. Ind. La Cometa
43700 EL VENDRELL
TARRAGONA-ESPAÑA
Tel.: (+34) 977 665 147
Fax : (+34) 977 664 989
info@safi-valvulas.com

SAFI America

Las Garzas Trade Center
Las Garzas #950, B
Quilicura
SANTIAGO – CHILE
Tél.: (+56 2) 2 510 3500
Fax : (+56 2) 2 510 3507
info@safi-america.com

DIMENSIONS

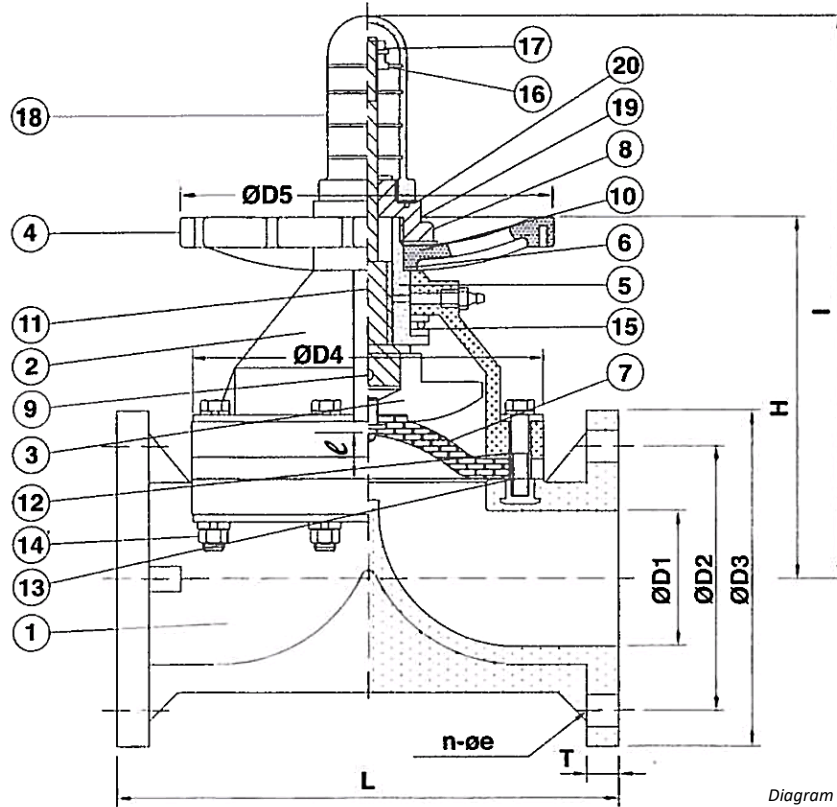


Diagram representing a DN80

DN mm	ØD1 mm	ØD2		ØD3	øe		n		ØD4	ØD5	L	T	H	I	l
		DIN	ANSI		DIN	ANSI	DIN	ANSI							
65 - 2"1/2	68	145	139,45	185	18	19	4	4	183	202	290	22	197	276	32
80 - 3"	78	160	152,4	200	18	19	8	4	201	202	310	22	218	293	34
100 - 4"	100	180	190,5	210	18	19	8	8	250	241	350	25	261	370	54
125 - 5"	125	210	215,9	250	18	22,2	8	8	321	274	400	24	308	412	72
150 - 6"	148	240	241,3	285	23	22,2	8	8	382	395	480	30	334	471	72
200 - 8"	198	295	298,4	340	23	22,2	8	8	431	395	600	32	419	625	96
250 - 10"	248	350	362	395	23	25,4	12	12	529	555	680	32	510	750	132

DIN = Drilling in accordance with EN1092-1 PN10/PN16

ANSI = Drilling in accordance with ASME B16.5 CLASS 150

DN	WEIGHT (in Kg)			
	PVC-U	PVC-C	PP-H	PVDF
65	-	-	-	-
80	7,79	7,79	7,06	9,20
100	17,38	17,38	11,36	14,06
125	17,68	17,68	16,20	22,14
150	28,40	28,40	26,22	32,84
200	43,12	43,12	39,56	51,54
250	84,33	84,33	78,66	88,48

Les descriptions et caractéristiques figurant sur ce document sont données uniquement à titre d'information et non d'engagement contractuel. SAFI se réserve le droit d'effectuer sans préavis, toute modification.
SAFI has a policy of continuously developing its product range and the above data is subject to change without prior notification.

Die Beschreibungen und Daten, die sich auf diesem Dokument befinden, sind rein informativ und unverbindlich. SAFI behält sich vor, ohne Vorankündigung Änderungen vorzunehmen, die als technisch notwendig erachtet werden.
Las descripciones y características que figuran en este documento son indicativas. En ningún caso son contractuales. SAFI se reserva el derecho sin previo aviso de efectuar cualquier modificación.

PARTS LIST

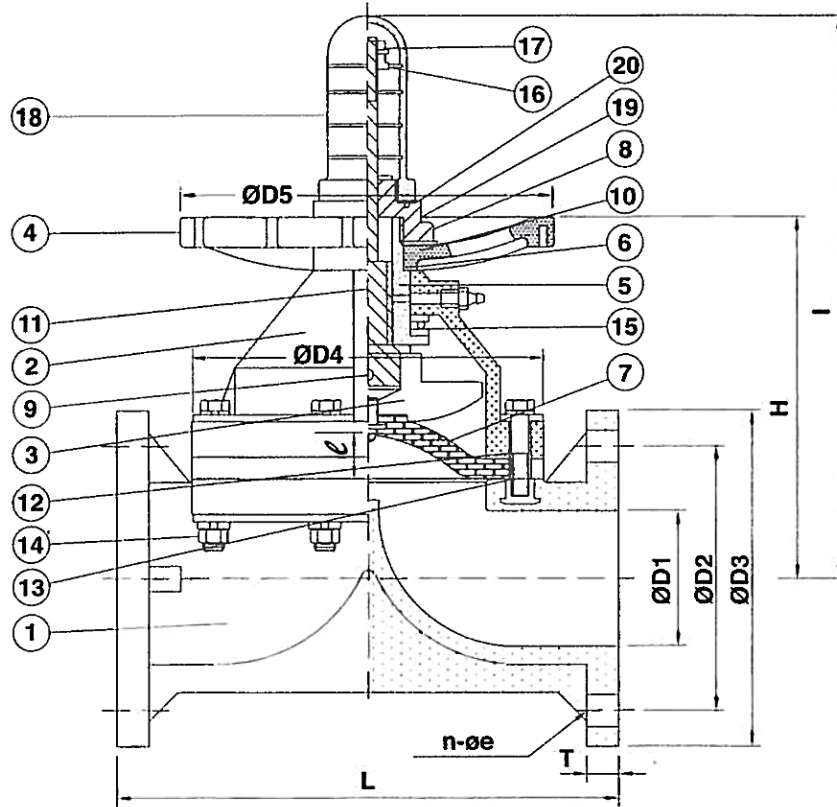
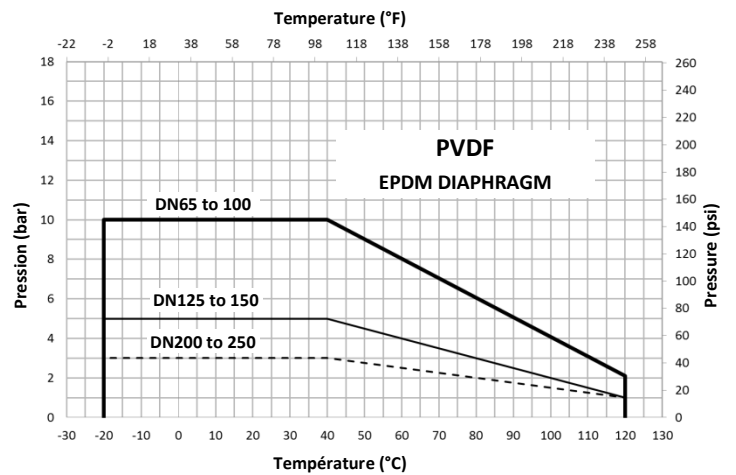
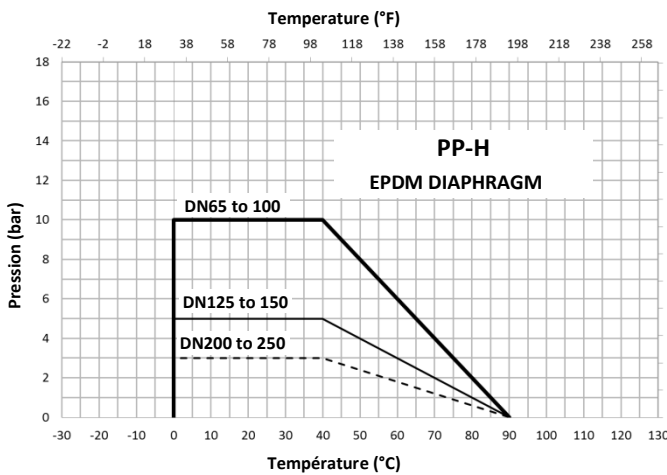
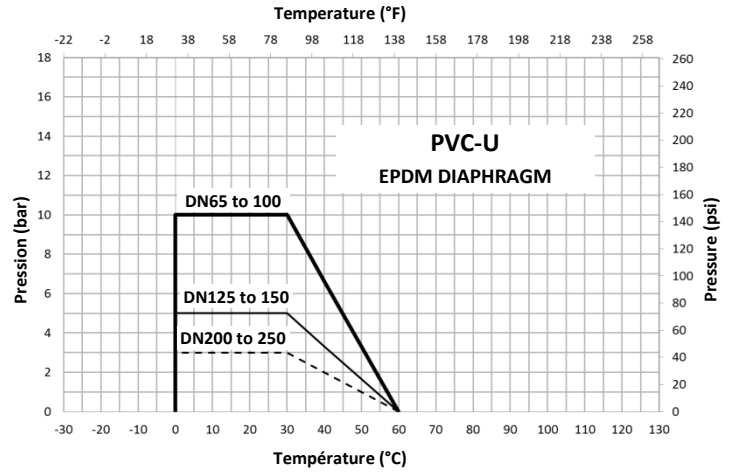
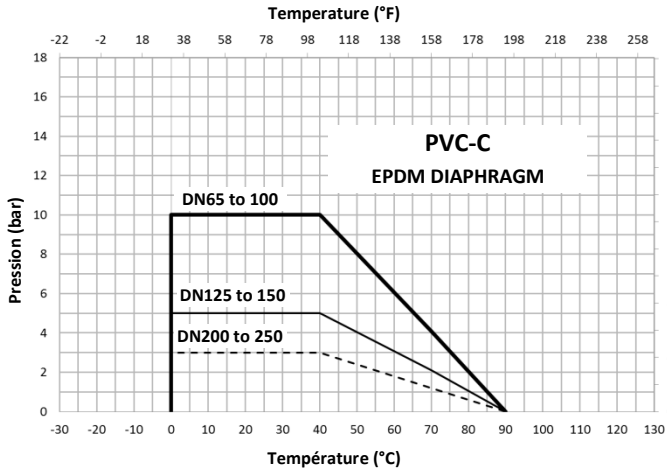


Diagram representing a DN80

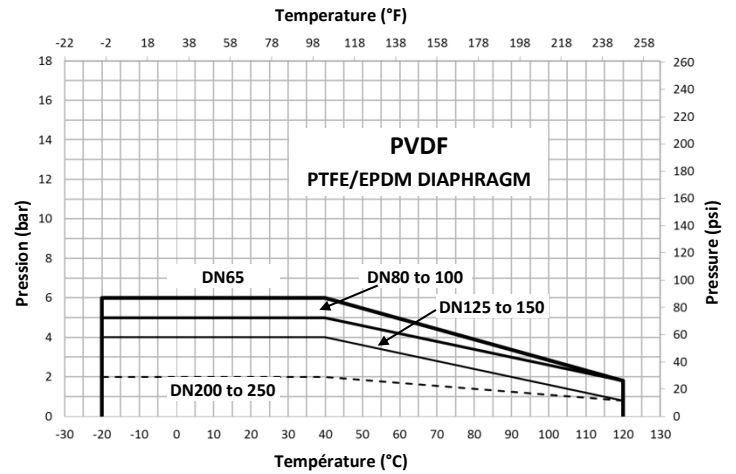
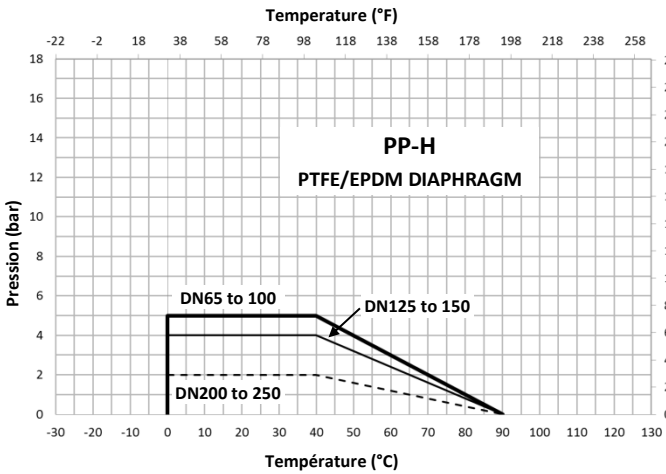
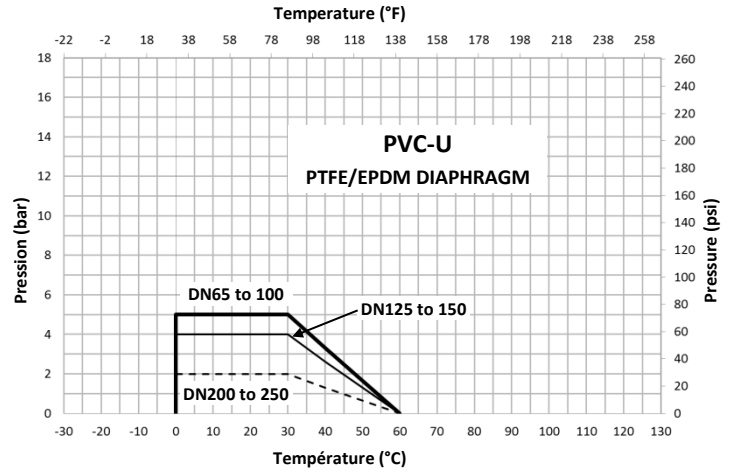
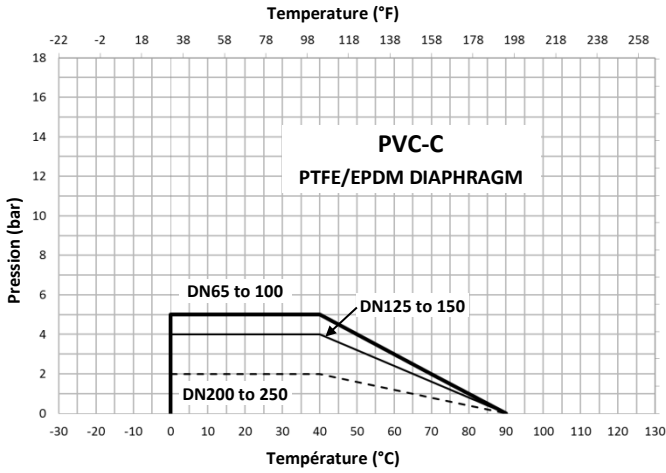
N°	QTY	DESCRIPTION	MATERIAL
1	1	BODY	PP-H, PVC-U, PVC-C, PVDF
2	1	BONNET	PPGF, PVDF
3	1	COMPRESSOR	FC20
4	1	HAND WHEEL	PP-H, ABS
5	1	SPINDLE	FC25
6	1	THREADED ROD	ACIER SS-41
7	1	DIAPHRAGM	EPDM/PTFE
8	1	HANDWHEEL NUT	PVC-U
9	1	COPRESSOR PIN	SS 304
10	1	IDENTIFICATION PLATE	PVC-U
11	1	GREASE NIPPLE	SS 304
12	4 à 8	NUT, BOLT & WASHER	SS 304
13	4 à 8	MOULDED INSERT	SS 41
14	4 à 12	NUT & WASHER	SS 304
15	1	THRUST BEARING	LAITON
16	1	LOCK NUT	SS 304
17	1	LOCKING RING NUT	SS 304
18	1	TRANSPARENT COVER	PC
19	1	O-RING	EPDM
20	1	WASHER	SS 304

PRESSURE / TEMPERATURE CURVES



Les descriptions et caractéristiques figurant sur ce document sont données uniquement à titre d'information et non d'engagement contractuel. SAFI se réserve le droit d'effectuer sans préavis, toute modification.
SAFI has a policy of continuously developing its product range and the above data is subject to change without prior notification.

Die Beschreibungen und Daten, die sich auf diesem Dokument befinden, sind rein informativ und unverbindlich. SAFI behält sich vor, ohne Vorankündigung Änderungen vorzunehmen, die als technisch notwendig erachtet werden.
Las descripciones y características que figuran en este documento son indicativas. En ningún caso son contractuales. SAFI se reserva el derecho sin previo aviso de efectuar cualquier modificación.



Les descriptions et caractéristiques figurant sur ce document sont données uniquement à titre d'information et non d'engagement contractuel. SAFI se réserve le droit d'effectuer sans préavis, toute modification.
SAFI has a policy of continuously developing its product range and the above data is subject to change without prior notification.

Die Beschreibungen und Daten, die sich auf diesem Dokument befinden, sind rein informativ und unverbindlich. SAFI behält sich vor, ohne Vorankündigung Änderungen vorzunehmen, die als technisch notwendig erachtet werden.
Las descripciones y características que figuran en este documento son indicativas. En ningún caso son contractuales. SAFI se reserva el derecho sin previo aviso de efectuar cualquier modificación.

Pressure/Temperature Summary

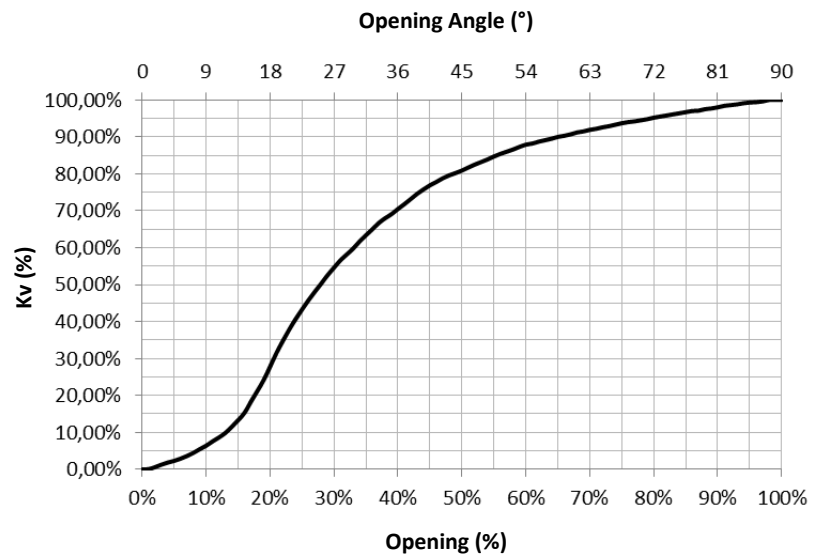
DN	WORKING PRESSURE (in bars at 20°C)							
	EPDM DIAPHRAGM				PTFE/EPDM DIAPHRAGM			
	PVC-U	PVC-C	PP-H	PVDF	PVC-U	PVC-C	PP-H	PVDF
65	10	10	10	10	5	5	5	6
80 to 100	10	10	10	10	5	5	5	5
125 to 150	5	5	5	5	4	4	4	4
200 to 250	3	3	3	3	2	2	2	2

Type of Seal	WORKING TEMPERATURE			
	PVC-U	PVC-C	PP-H	PVDF
EPDM	0°C to + 60°C	0°C to + 90°C	0°C to + 90°C	-20°C to +120°C
PTFE/EPDM	0°C to + 60°C	0°C to + 90°C	0°C to + 90°C	-20°C to +120°C

PRESSURE LOSS

DN	Kv (m ³ /h)
65	78,4
80	98,6
100	158,8
125	252,4
150	343,2
200	598,3
250	865,7

Kv in accordance with NF EN 1267



Our valves are guaranteed for an average fluid velocity in the pipeline of ≤ 2 m/s. Please contact us with the working conditions for any higher speed.

CHEMICAL RESISTANCE

The chemical resistance of the valve is subject to the type of fluid, the temperature, the pressure, as well as the materials and seals of the valve.

Please contact us to have a personalized analysis of the resistance of one of our products to a given fluid

You can also consult, for information only, the table given in ISO 10358. However, this table cannot be considered as a recommendation by SAFI who could not be held liable for the use of this document.

Les descriptions et caractéristiques figurant sur ce document sont données uniquement à titre d'information et non d'engagement contractuel. SAFI se réserve le droit d'effectuer sans préavis, toute modification.
SAFI has a policy of continuously developing its product range and the above data is subject to change without prior notification.

Die Beschreibungen und Daten, die sich auf diesem Dokument befinden, sind rein informativ und unverbindlich. SAFI behält sich vor, ohne Vorankündigung Änderungen vorzunehmen, die als technisch notwendig erachtet werden.
Las descripciones y características que figuran en este documento son indicativas. En ningún caso son contractuales. SAFI se reserva el derecho sin previo aviso de efectuar cualquier modificación.

OPTION: LOCKING SYSTEM

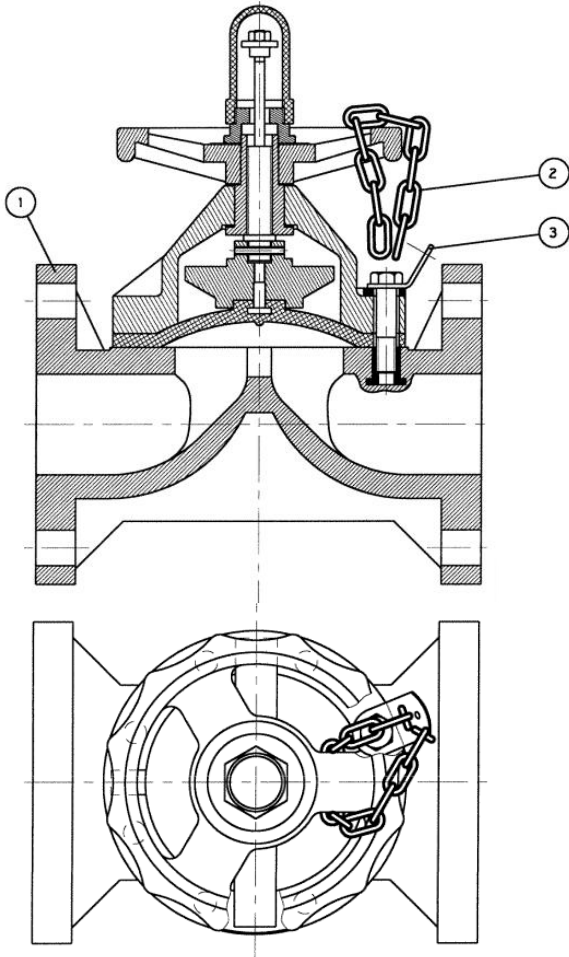


Diagram representing assembly on a DN80

N°	QTY	DESCRIPTION	MATERIAL
1	1	Diaphragm Valve DN65 to DN250	PP-H, PVC-U, PVC-C, PVDF
2	1	Chain	SS 304
3	2	Locking plate	SS 304

Locking system in SS 316: contact us

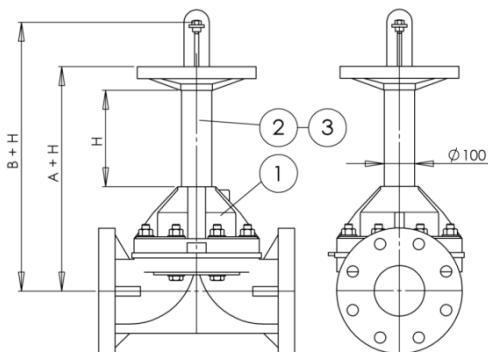
Principe :

When the Diaphragm valve is in a position to be immobilized, chain the branch of the steering wheel located above the locking plate and bind the chain to the hole in the plate with a Ø6 padlock. (not provided)

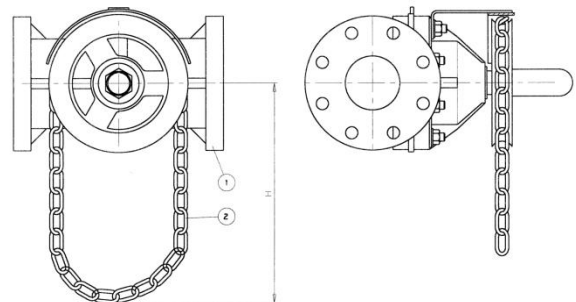
NOTA: Padlock not included

DN	PRODUCT CODE
65	3201-06K
80	3201-07K
100	3201-08K
125	3201-09K
150	
200	3201-11K
250	

OTHER AVAILABLE OPTIONS



Handle Extension (Height H upon request)



Operation by Chain and Pulley

Contac us, for more information on the Available Options

Les descriptions et caractéristiques figurant sur ce document sont données uniquement à titre d'information et non d'engagement contractuel. SAFI se réserve le droit d'effectuer sans préavis, toute modification.
SAFI has a policy of continuously developing its product range and the above data is subject to change without prior notification.

Die Beschreibungen und Daten, die sich auf diesem Dokument befinden, sind rein informativ und unverbindlich. SAFI behält sich vor, ohne Vorankündigung Änderungen vorzunehmen, die als technisch notwendig erachtet werden.
Las descripciones y características que figuran en este documento son indicativas. En ningún caso son contractuales. SAFI se reserva el derecho sin previo aviso de efectuar cualquier modificación.

DETERMINING A PRODUCT CODE

TYPE	SPECIFICATION	DN	Fitting (Inlet)	Fitting (Outlet)	Seals
3200 = PVC-U Diaphragm Valve 3201 = PP-H Diaphragm Valve 3203 = PVDF Diaphragm Valve 3211 = PVC-C Diaphragm Valve	- = Standard Diaphragm Valve	06 = DN65 07 = DN80 08 = DN100 09 = DN125 10 = DN150 11 = DN200 12 = DN250	F = Flanges with drilling in accordance with EN 1092-1 PN10/PN16 (DIN) G = Flanges with drilling in accordance with EN1759-1/ASME B16.5 Class 150 (ANSI)	F = Flanges with drilling in accordance with EN 1092-1 PN10/PN16 (DIN) G = Flanges with drilling in accordance with EN1759-1/ASME B16.5 Class 150 (ANSI)	E = EPDM P = PTFE + EPDM

Example: 3200-08FFE

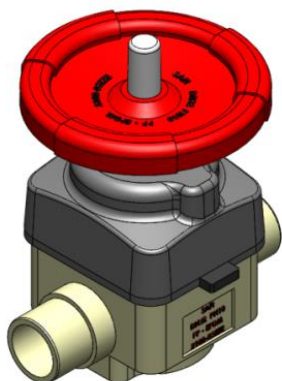
3200	-	08	F	F	E
PVC-U Diaphragm Valve	Standard	DN100	Flange with drilling in accordance with EN 1092-1 PN10/PN16 (DIN)	Flange with drilling in accordance with EN 1092-1 PN10/PN16 (DIN)	EPDM

Example: Diaphragm Valve + LOCKING SYSTEM: 3200-08FFE + 3201-08K

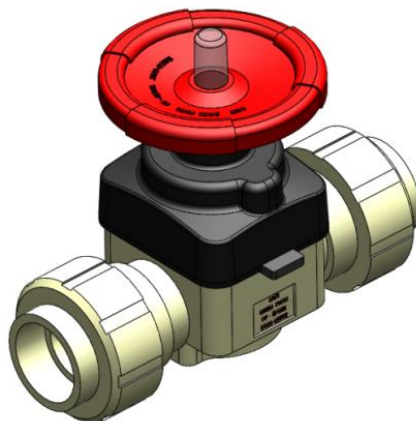
3200-08FFE	+	3201-08K
PVC-U Diaphragm Valve DN100 Flanges with drilling in accordance with EN 1092-1 PN10/PN16 (DIN) EPDM	+	LOCKING SYSTEM for a DN100

DIAPHRAGM VALVE - DN15 (1/2") to DN50 (2") – PVC-U, PP-H, PVDF

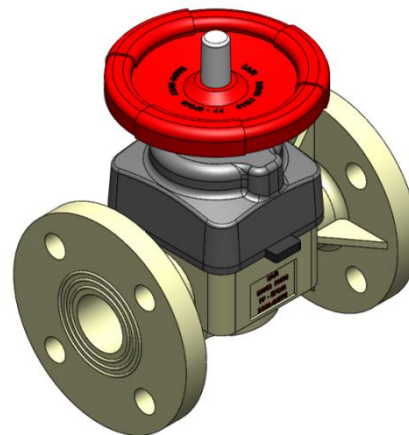
Conform to the 2014/68/EU Directive



DN40 – PP-H
Metric spigot outlets



DN40 – PP-H
Double union



DN40 – PP-H
Flanged

MAIN FEATURES

- Optimized pressure drop due to body design.
- Stainless steel mounting inserts designed to support the valve. Same distance between the inserts for all DN.
- Standard handwheel suitable for handle extension and/or locking system.
- EPDM, FPM, or PTFE diaphragm (EPDM backing).
- Color wheel according to diaphragm material (Red= EPDM, Green = FPM, Blue = PTFE).

The design of diaphragm valves does not allow operation under vacuum.

STANDARDS AND APPROVALS



NR320 : Certification scheme of materials and equipment for the classification of marine units

Les descriptions et caractéristiques figurant sur ce document sont données uniquement à titre d'information et non d'engagement contractuel. SAFI se réserve le droit d'effectuer sans préavis, toute modification.

SAFI has a policy of continuously developing its product range and the above data is subject to change without prior notification.

Die Beschreibungen und Daten, die sich auf diesem Dokument befinden, sind rein informativ und unverbindlich. SAFI behält sich vor, ohne Vorankündigung Änderungen vorzunehmen, die als technisch notwendig erachtet werden.

Las descripciones y características que figuran en este documento son indicativas. En ningún caso son contractuales. SAFI se reserva el derecho sin previo aviso de efectuar cualquier modificación.

SAFI

Av. Jacques Moison – BP 1
26770 TAULIGNAN
FRANCE
Tél.: (+33) 4 75 53 56 29
Fax : (+33) 4 75 53 62 78
info@safi-valves.com

SAFI Limited

35 Holton Road
Holton Heath Trading Park
POOLE Dorset - BH16 6LT
UNITED KINGDOM
Tél.: (+44) 1202 624618
Fax : (+44) 1202 628500
sales@safi-valves.com

SAFI Deutschland

Kunststoffarmaturen
Vertriebs GmbH
Jahnstrasse 29
64319 PFUNGSTADT
DEUTSCHLAND
Tél. : (+49) 61 57 81 919
Fax : (+49) 61 57 82 025
info-deutschland@safi-valves.com

SAFI Fabrica de Valvulas

C/ Carboners, 35
Pol. Ind. La Cometa
43700 EL VENDRELL
TARRAGONA-ESPAÑA
Tel.: (+34) 977 665 147
Fax : (+34) 977 664 989
info@safi-valvulas.com

SAFI America

Las Garzas Trade Center
Las Garzas #950, B
Quilicura
SANTIAGO – CHILE
Tél.: (+56 2) 2 510 3500
Fax : (+56 2) 2 510 3507
info@safi-america.com

DIMENSIONS

Metric spigots version

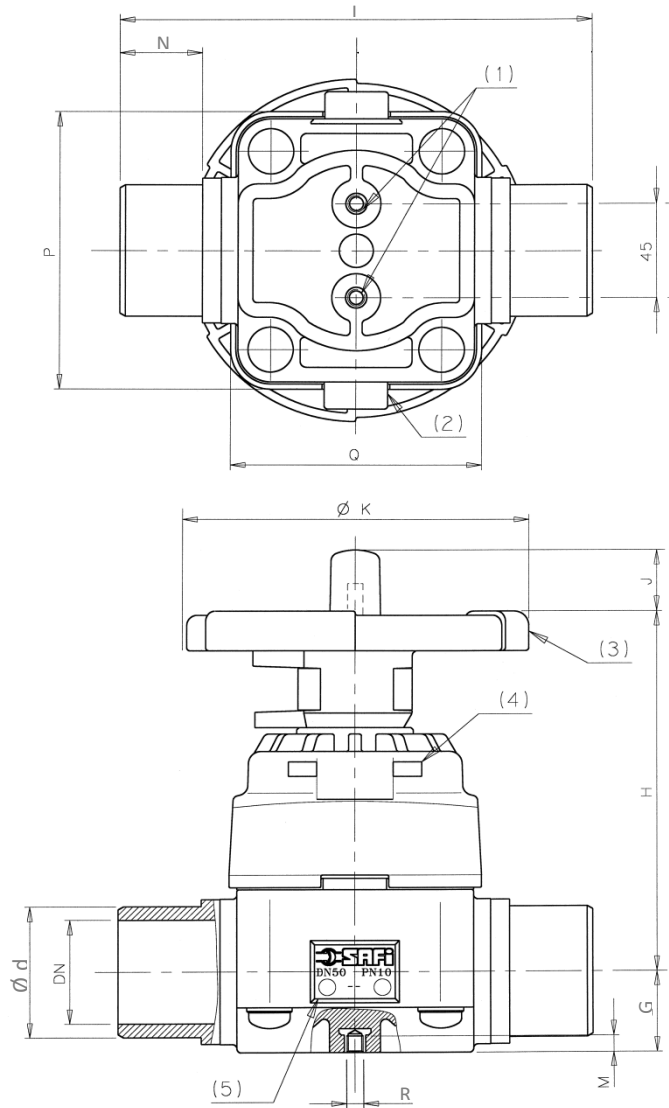


Diagram representing a DN50

DN	Ød	G	H	J	ØK	L	M	N	P	Q	R	WEIGHT (in Kg)		
												PVC-U	PP-H	PVDF
15	20	21,5	120	13	101	124	10	17	91	75	M6	0,76	0,68	0,80
20	25	21,5	120	13	101	144	10	19,5	91	75	M6	0,79	0,70	0,83
25	32	21,5	120	13	101	154	10	23,5	91	75	M6	0,80	0,71	0,85
32	40	32	142	25	139	174	8	27	110	101	M8	1,50	1,32	1,61
40	50	32	142	25	139	194	8	32	110	101	M8	1,56	1,34	1,66
50	63	39	175	30	163	224	8	39	137	123	M8	2,80	2,4	3,02

Les descriptions et caractéristiques figurant sur ce document sont données uniquement à titre d'information et non d'engagement contractuel. SAFI se réserve le droit d'effectuer sans préavis, toute modification.
SAFI has a policy of continuously developing its product range and the above data is subject to change without prior notification.

Die Beschreibungen und Daten, die sich auf diesem Dokument befinden, sind rein informativ und unverbindlich. SAFI behält sich vor, ohne Vorankündigung Änderungen vorzunehmen, die als technisch notwendig erachtet werden.
Las descripciones y características que figuran en este documento son indicativas. En ningún caso son contractuales. SAFI se reserva el derecho sin previo aviso de efectuar cualquier modificación.

Double union version + Female socket

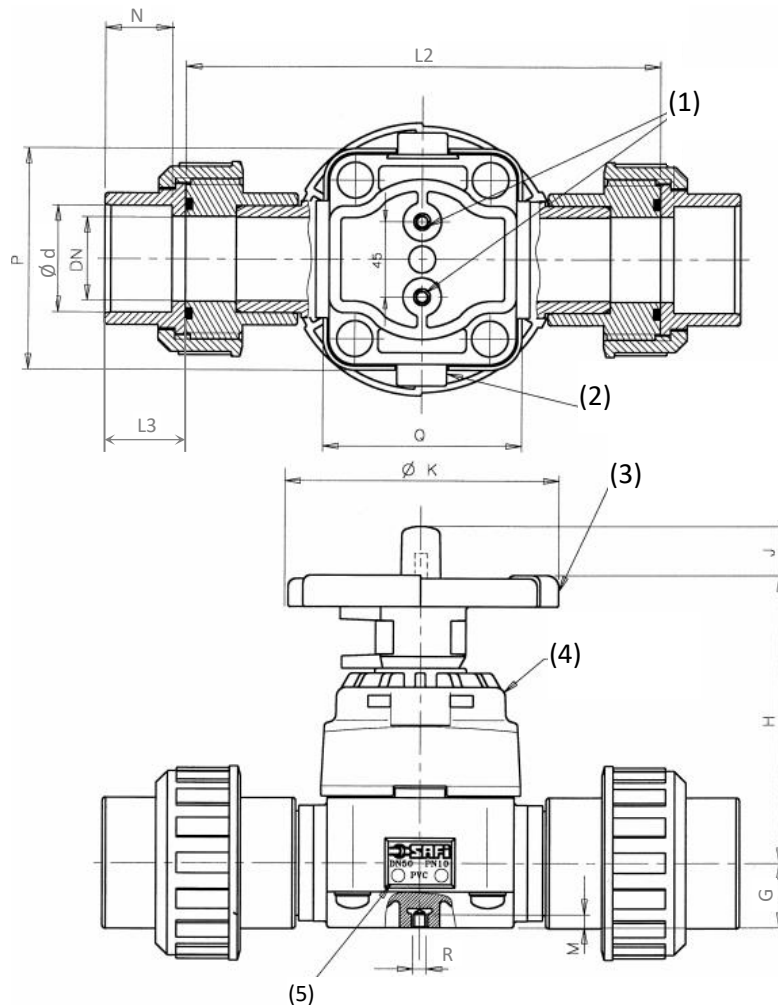


Diagram representing a DN50

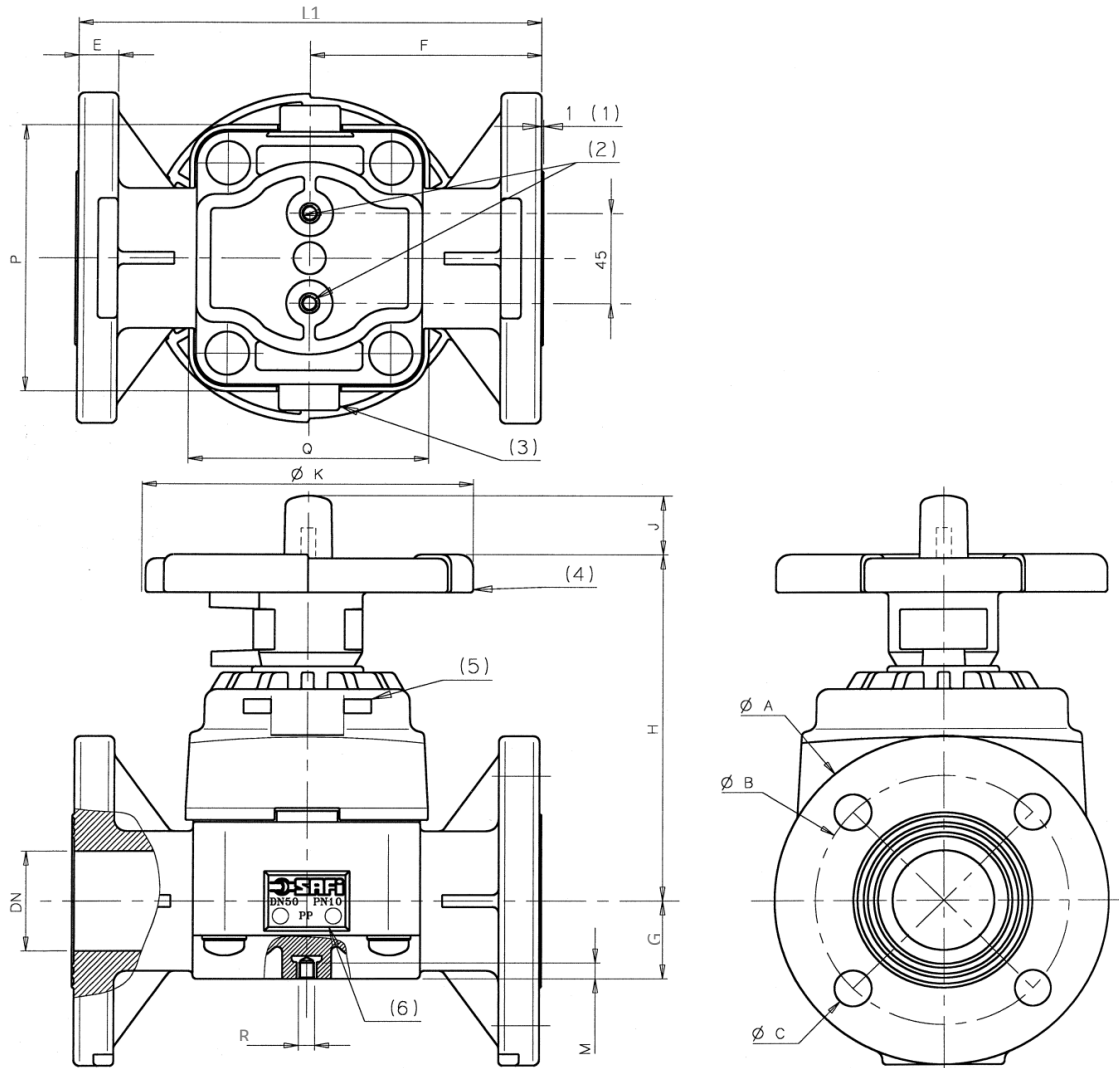
DN	Ød	PVC-U			PP-H					PVDF			
		Metric Socket		L2	Metric Socket		Metric Spigot	Threaded socket		L2	Metric Socket		L2
		N	L3		N	L3	L3	N	L3		N	L3	
15	20	16,5	22,5	142	17	21	49,5	17,5	22,5	151,5	17	21,5	144
20	25	20	25,5	159,5	18	22,5	49,5	20,5	25,5	169,5	18	22,5	162
25	32	23,5	28	172	20	24	49	22	29	182	20	24,5	173,3
32	40	27,5	32	197	22	27	49	24	30	205,5	22	26	199
40	50	24,5	32	216	25	30,5	48	24	31	227	25	31	222
50	63	24,5	34,5	254	29,5	35,5	48	24	32,5	256	29,5	36	258,5

DN	WEIGHT (in Kg)										
	H	J	ØK	G	M	P	Q	R	PVC-U	PP-H	PVDF
15	120	13	101	21,5	10	91	75	M6	0,85	0,94	0,94
20	120	13	101	21,5	10	91	75	M6	0,87	1,07	1,03
25	120	13	101	21,5	10	91	75	M6	0,90	1,18	1,09
32	142	25	139	32	8	110	101	M8	1,80	2,09	1,99
40	142	25	139	32	8	110	101	M8	1,96	2,28	2,21
50	175	30	163	39	8	137	123	M8	2,90	3,70	3,87

Les descriptions et caractéristiques figurant sur ce document sont données uniquement à titre d'information et non d'engagement contractuel. SAFI se réserve le droit d'effectuer sans préavis, toute modification.
SAFI has a policy of continuously developing its product range and the above data is subject to change without prior notification.

Die Beschreibungen und Daten, die sich auf diesem Dokument befinden, sind rein informativ und unverbindlich. SAFI behält sich vor, ohne Vorankündigung Änderungen vorzunehmen, die als technisch notwendig erachtet werden.
Las descripciones y características que figuran en este documento son indicativas. En ningún caso son contractuales. SAFI se reserva el derecho sin previo aviso de efectuar cualquier modificación.

Flanged Version



NOTE: Our flanged valve body, designed as one-piece body, requires imperatively the use of bolts with adapted lengths for the connection. Using flat washers is highly recommended.

The optimum tightening for the bolts of the flanges is obtained at a torque of 10 to 20 N.m.

DN	ØA	ØB			ØC			E	F	L1			H	J	ØK	G	M	P	Q	R
		DIN	ANSI	BS	DIN	ANSI	BS			PVC-U	PP-H	PVDF								
15	95	65	60	-	14	16	-	14	65	131	131	130,5	120	13	101	21,5	10	91	75	M6
20	105	75	70	-	14	16	-	16	75	151	150	150	120	13	101	21,5	10	91	75	M6
25	115	85	79,5	82	14	16	14	16	80	162	161	160,5	120	13	101	21,5	10	91	75	M6
32	140	100	89	87,3	18	16	14	18	90	181	181	180	142	25	139	32	8	110	101	M8
40	150	110	98,4	98,4	18	16	14	18	100	201	201	200	142	25	139	32	8	110	101	M8
50	165	125	120,6	114,3	18	19	18	20	115	232	231	230	175	30	163	39	8	137	123	M8

DN = Drilling in accordance with EN1092-1 PN10/PN16 ANSI = Drilling in accordance with ASME B16.5 CLASS 150

DN	WEIGHT (in Kg)		
	PVC-U	PP-H	PVDF
15	1,02	0,84	1,02
20	1,14	0,92	1,27
25	1,22	0,98	1,32
32	2,2	1,76	2,5
40	2,3	1,85	2,7
50	3,9	3,09	4,4

Les descriptions et caractéristiques figurant sur ce document sont données uniquement à titre d'information et non d'engagement contractuel. SAFI se réserve le droit d'effectuer sans préavis, toute modification.
SAFI has a policy of continuously developing its product range and the above data is subject to change without prior notification.

Die Beschreibungen und Daten, die sich auf diesem Dokument befinden, sind rein informativ und unverbindlich. SAFI behält sich vor, ohne Vorankündigung Änderungen vorzunehmen, die als technisch notwendig erachtet werden.
Las descripciones y características que figuran en este documento son indicativas. En ningún caso son contractuales. SAFI se reserva el derecho sin previo aviso de efectuar cualquier modificación.

PARTS LIST

Metric spigots version

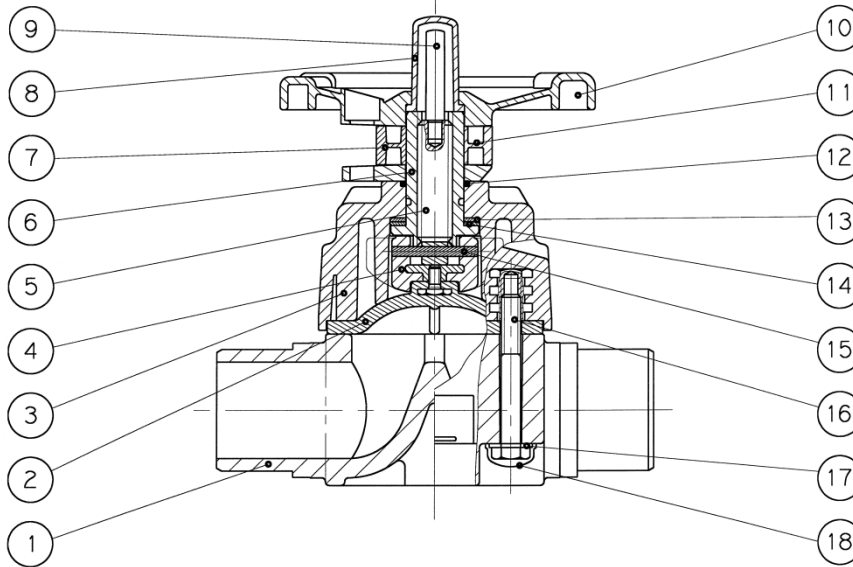


Diagram showing a DN50

ITEM	No	DESCRIPTION	MATERIAL
1	1	VALVE BODY WITH DIN METRIC SPIGOTS	PVC-U, PP-H, PVDF
		VALVE BODY WITH BS SPIGOTS	PVC-U, PP-H, PVDF
2	1	EPDM DIAPHRAGM	EPDM
		FPM DIAPHRAGM	FPM
		PTFE DIAPHRAGM WITH EPDM BACKING	PTFE + EPDM
3	1	BONNET	PPGF
4	1	DIAPHRAGM COMPRESSOR	PPGF
5	1	DIAPHRAGM COMPRESSOR SCREW	STEEL
6	1	GUIDE RING	BRASS
7	1	HANDLE KEY	PPGF
8	1	TRANSPARENT CAP	PC
9	1	VISUAL POSITION INDICATOR	PP-H
10	1	RED WHEEL (FOR EPDM DIAPHRAGM)	PP-H
		GREEN WHEEL (FOR FPM DIAPHRAGM)	PP-H
		BLUE WHEEL (FOR PTFE DIAPHRAGM)	PP-H
11	1	LOCKING CLIP	PPGF
12	1	O'RING	EPDM
13	1	FIXED WASHER	-
14	1	FLOATING WASHER	-
15	1	SPLIT IN	STEEL
16	4	FIXING SCREW	SS 316
17	4	FLAT WASHER	SS 316
18	4	PROTECTING CAP	PE

Double union version + Socket

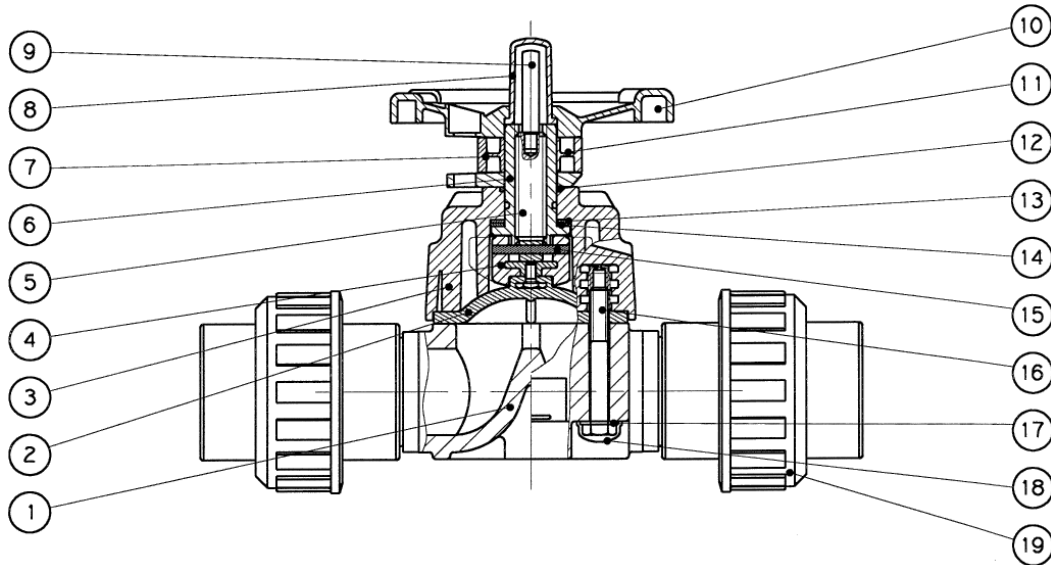


Diagram showing a DN50

ITEM	No	DESCRIPTION	MATERIAL
1	1	VALVE BODY WITH DIN FUSION SPIGOTS	PVC-U, PP-H, PVDF
2	1	EPDM DIAPHRAGM	EPDM
		FPM DIAPHRAGM	FPM
		PTFE DIAPHRAGM WITH EPDM BACKING	PTFE + EPDM
3	1	BONNET	PPGF
4	1	DIAPHRAGM COMPRESSOR	PPGF
5	1	DIAPHRAGM COMPRESSOR SCREW	STEEL
6	1	GUIDE RING	BRASS
7	1	HANDLE KEY	PPGF
8	1	TRANSPARENT CAP	PC
9	1	VISUAL POSITION INDICATOR	PP-H
10	1	RED WHEEL (FOR EPDM DIAPHRAGM)	PP-H
		GREEN WHEEL (FOR FPM DIAPHRAGM)	PP-H
		BLUE WHEEL (FOR PTFE DIAPHRAGM)	PP-H
11	1	LOCKING CLIP	PPGF
12	1	O'RING	EPDM
13	1	FIXED WASHER	-
14	1	FLOATING WASHER	-
15	1	SPLIT IN	STEEL
16	4	FIXING SCREW	SS 316
17	4	FLAT WASHER	SS 316
18	4	PROTECTING CAP	PE
19	2	PVC SOLVENT FEMALE UNION SOCKET	PVC-U
		PP-H FUSION FEMALE UNION SOCKET	PP-H
		PP-H FUSION UNION SPIGOT	PP-H
		PP-H THREADED UNION SOCKET	PP-H
		PVDF FUSION FEMALE UNION SOCKET	PVDF

As standard, PTFE Diaphragm Valves are supplied with EPDM O-rings. On request, they can be delivered in FPM.

Flanged Version

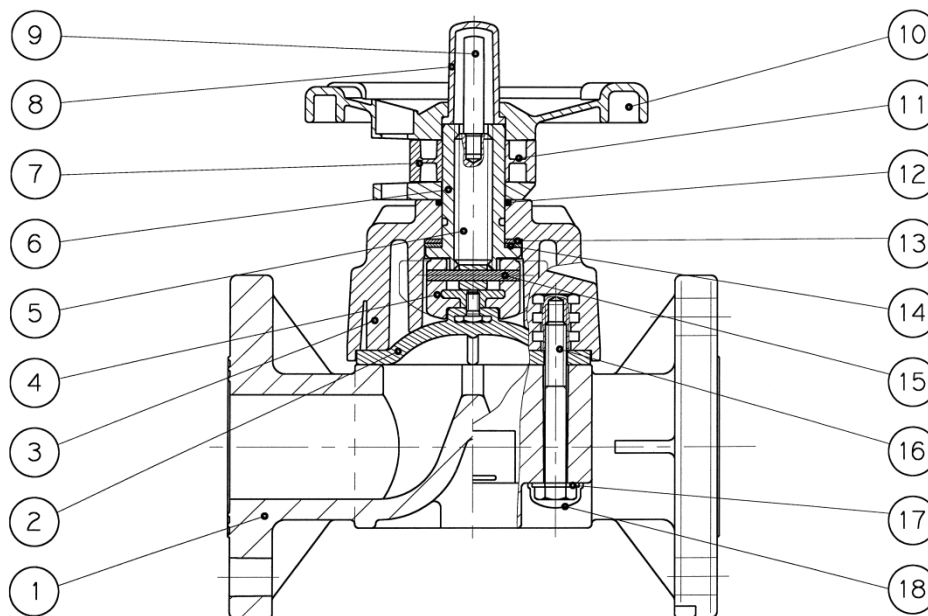
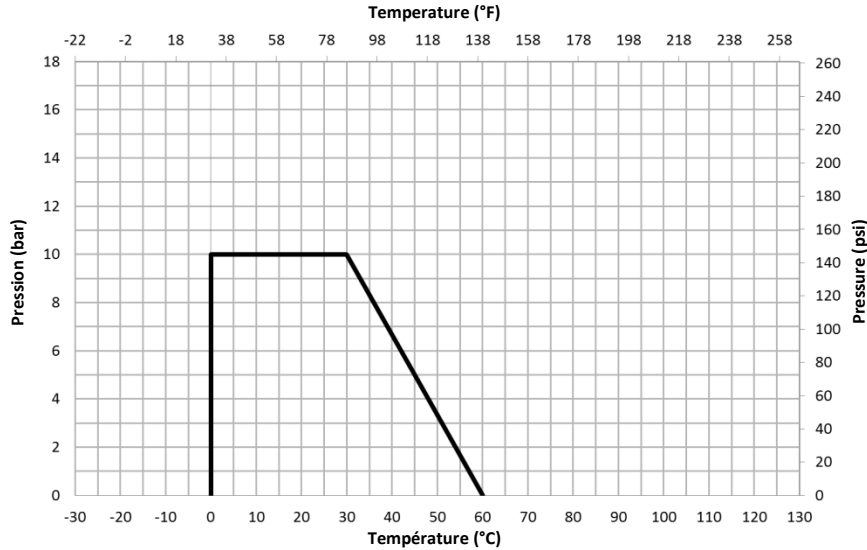


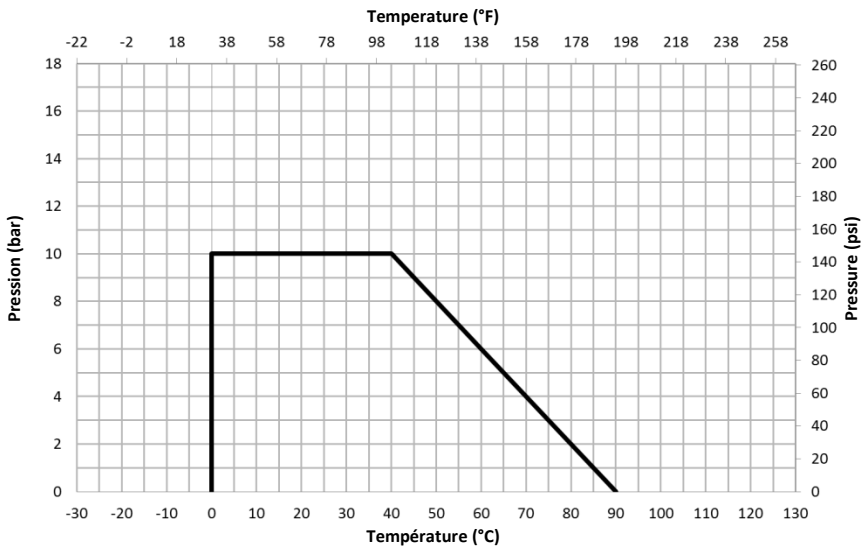
Diagram showing a DN50

ITEM	No	DESCRIPTION	MATERIAL
1	1	DIN FLANGED VALVE BODY	PVC-U, PP-H, PVDF
		ANSI FLANGED VALVE BODY	PVC-U, PP-H, PVDF
		BS FLANGED VALVE BODY	PVC-U, PP-H, PVDF
2	1	EPDM DIAPHRAGM	EPDM
		FPM DIAPHRAGM	FPM
		PTFE DIAPHRAGM WITH EPDM BACKING	PTFE + EPDM
3	1	BONNET	PPGF
4	1	DIAPHRAGM COMPRESSOR	PPGF
5	1	DIAPHRAGM COMPRESSOR SCREW	STEEL
6	1	GUIDE RING	BRASS
7	1	HANDLE KEY	PPGF
8	1	TRANSPARENT CAP	PC
9	1	VISUAL POSITION INDICATOR	PP-H
10	1	RED WHEEL (FOR EPDM DIAPHRAGM)	PP-H
		GREEN WHEEL (FOR FPM DIAPHRAGM)	PP-H
		BLUE WHEEL (FOR PTFE DIAPHRAGM)	PP-H
11	1	LOCKING CLIP	PPGF
12	1	O'RING	EPDM
13	1	FIXED WASHER	-
14	1	FLOATING WASHER	-
15	1	SPLIT IN	STEEL
16	4	FIXING SCREW	SS 316
17	4	FLAT WASHER	SS 316
18	4	PROTECTING CAP	PE

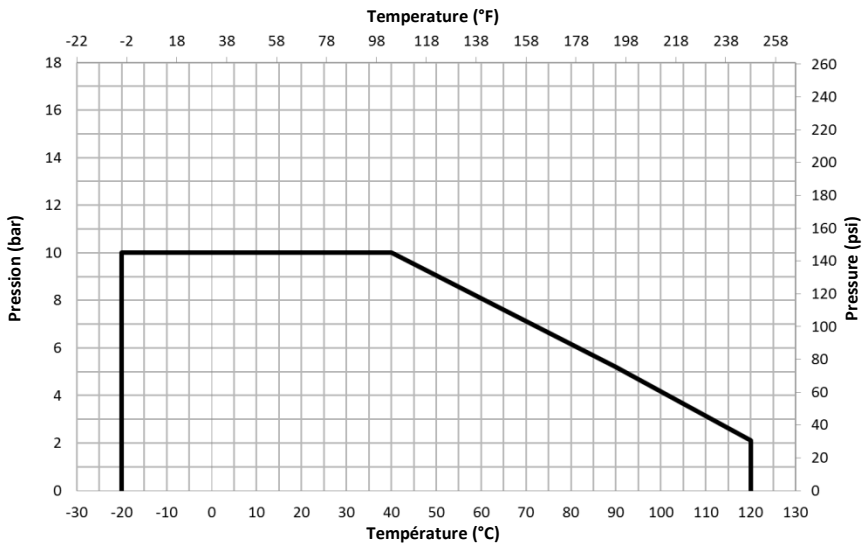
PRESSURE / TEMPERATURE CURVES



PVC-U



PP-H



PVDF

Les descriptions et caractéristiques figurant sur ce document sont données uniquement à titre d'information et non d'engagement contractuel. SAFI se réserve le droit d'effectuer sans préavis, toute modification.
SAFI has a policy of continuously developing its product range and the above data is subject to change without prior notification.

Die Beschreibungen und Daten, die sich auf diesem Dokument befinden, sind rein informativ und unverbindlich. SAFI behält sich vor, ohne Vorankündigung Änderungen vorzunehmen, die als technisch notwendig erachtet werden.
Las descripciones y características que figuran en este documento son indicativas. En ningún caso son contractuales. SAFI se reserva el derecho sin previo aviso de efectuar cualquier modificación.

Pressure/Temperature Summary

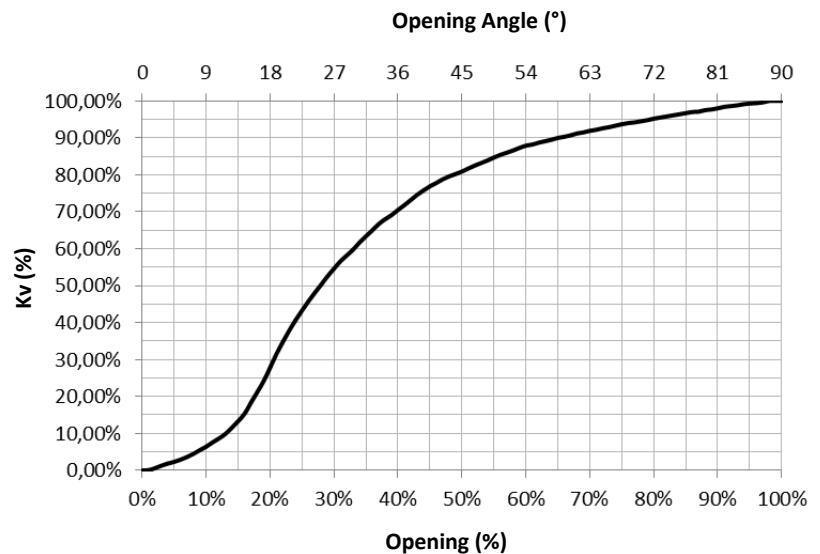
Diaphragm	Working Pressure	Working Temperature		
		PVC-U	PP-H	PVDF
EPDM / FPM / PTFE	10 bars at 20°C	0°C to +60°C	0°C to +90°C	-20°C to +120°C
FPM	10 bars at 20°C	0°C to +60°C	0°C to +90°C	-20°C to +120°C
PTFE	10 bars at 20°C	0°C to +60°C	0°C to +90°C	-20°C to +120°C

The mechanical characteristics of the FPM and FFPM seals subjected to an ambient temperature below -5°C require the implementation of proper insulation on the valves equipped with such seals. Contact us for more information.

PRESSURE LOSS

DN	Kv (m ³ /h)
15	6,1
20	9,4
25	12,2
32	24,3
40	29,3
50	45,8

Kv in accordance with NF EN 1267



Our valves are guaranteed for an average fluid velocity in the pipeline of ≤ 2 m/s. Please contact us with the working conditions for any higher speed.

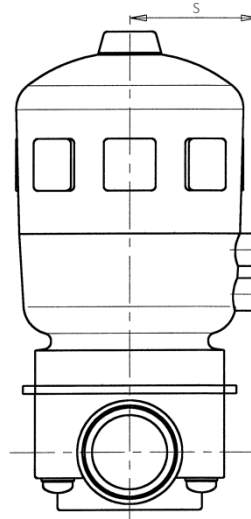
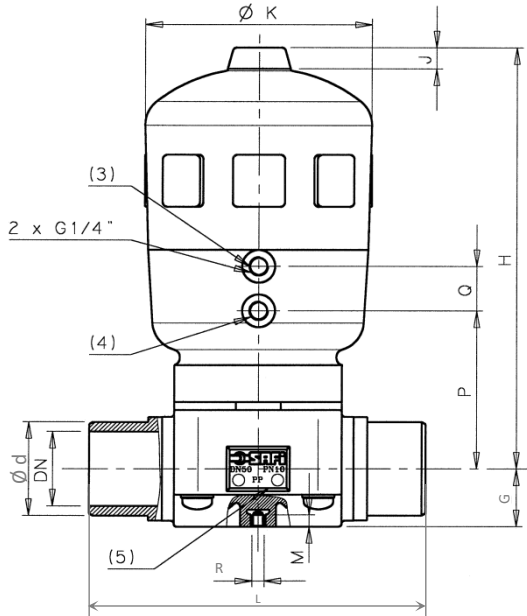
CHEMICAL RESISTANCE

The chemical resistance of the valve is subject to the type of fluid, the temperature, the pressure, as well as the materials and seals of the valve.

Please contact us to have a personalized analysis of the resistance of one of our products to a given fluid

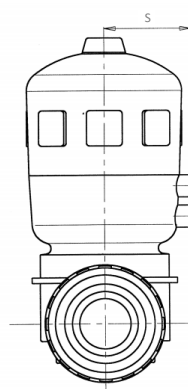
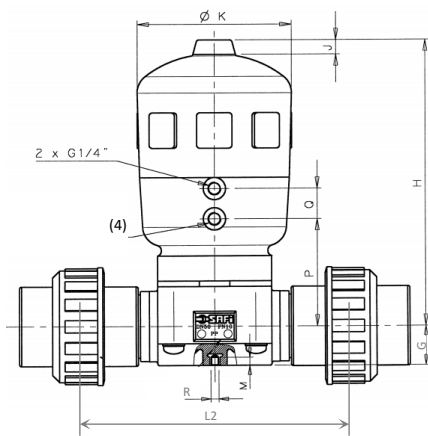
You can also consult, for information only, the table given in ISO 10358. However, this table cannot be considered as a recommendation by SAFI who could not be held liable for the use of this document.

OPTION: PNEUMATIC ACTUATION

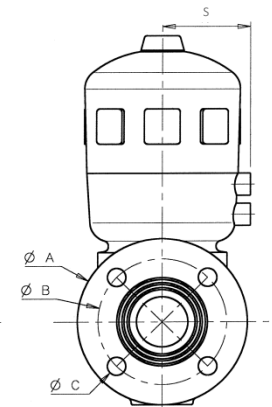
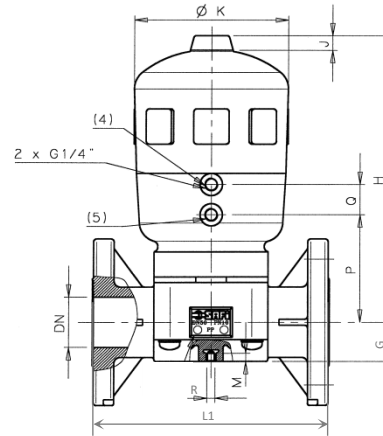


- (3) Input supply for the closure of a normally open and double acting valve
- (4) Input supply for the closure of a normally closed and double acting valve

Metric spigot version



Double union version + Socket



Flanged version

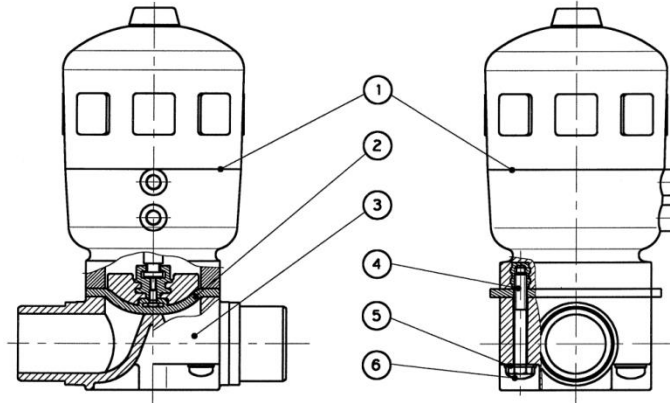
		ACTUATOR																	
		DIMENSIONS									WEIGHT (in kg)			PRODUCT CODE					
DN	Type	G	H	J	ØK	M	P	Q	R	S	NC	NO	DA	NC	NO	DA	L	L1	L2
15	NC, NO, DA	21,5	174	11	101	10	64	24	M6	60	1,5	0,9	0,9	B08NF-02	B08NO-02	B08DE-02	See page 2	See page 4	See page 3
20	NC, NO, DA	21,5	174	11	101	10	64	24	M6	60	1,5	0,9	0,9	B08NF-02	B08NO-02	B08DE-02			
25	NC, NO, DA	21,5	174	11	101	10	64	24	M6	60	1,5	0,9	0,9	B08NF-02	B08NO-02	B08DE-02			
32	NC, NO, DA	32	236	14	127	8	89	24	M8	73	3	2	2	B10NF-04	B10NO-04	B10DE-04			
40	NC, NO, DA	32	236	14	127	8	89	24	M8	73	3	2	2	B10NF-04	B10NO-04	B10DE-04			
50	NC	39	283	14	153	8	105	30	M8	86	3	2	2	B12NF-05	-	-			
50	NO, DA	39	245	14	127	8	98	24	M8	73	5,5	2,5	2,5	-	B10NO-05	B10DE-05			

NC = Normally Closed NO = Normally Open DA = Double Acting

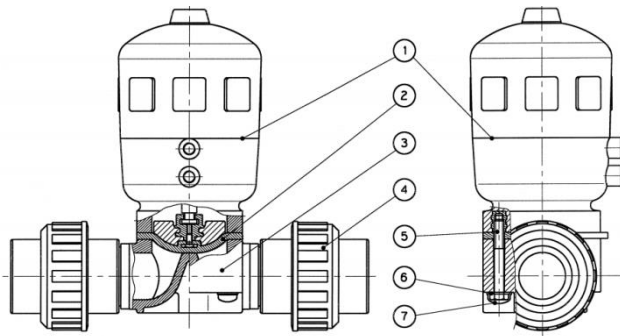
Les descriptions et caractéristiques figurant sur ce document sont données uniquement à titre d'information et non d'engagement contractuel. SAFI se réserve le droit d'effectuer sans préavis, toute modification.
SAFI has a policy of continuously developing its product range and the above data is subject to change without prior notification.

Die Beschreibungen und Daten, die sich auf diesem Dokument befinden, sind rein informativ und unverbindlich. SAFI behält sich vor, ohne Vorankündigung Änderungen vorzunehmen, die als technisch notwendig erachtet werden.
Las descripciones y características que figuran en este documento son indicativas. En ningún caso son contractuales. SAFI se reserva el derecho sin previo aviso de efectuar cualquier modificación.

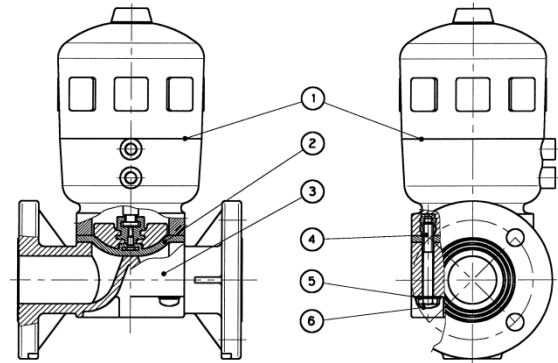
Parts List – Actuated Version



Metric spigot version



Double union version + Socket



Flanged version

ITEM	No	DESCRIPTION	MATERIAL
1	1	Pneumatic Actuator NC (Normally Closed)	POLYAMIDE FIBREGLASS
		Pneumatic Actuator NO (Normally Open)	POLYAMIDE FIBREGLASS
		Pneumatic Actuator DE (Double Acting)	POLYAMIDE FIBREGLASS
2	1	Diaphragm	EPDM, FPM, PTFE
3	1	Valve body	PVC-U, PP-H, PVDF
4	4	Screw	SS 316
5	4	Flat washer	SS 316
6	4	Protection cap	PE
7	2	Union end	PVC-U, PP-H, PVDF

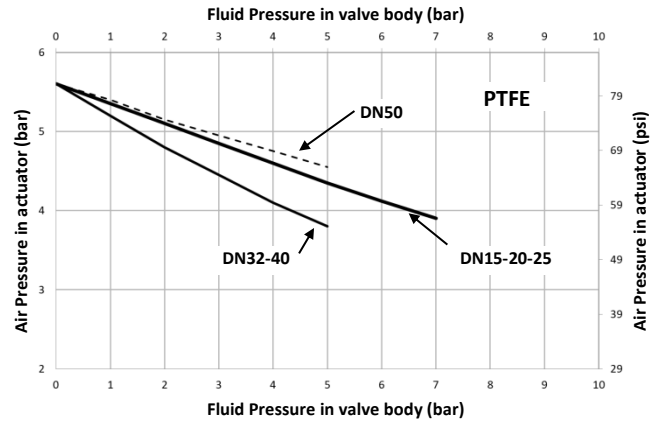
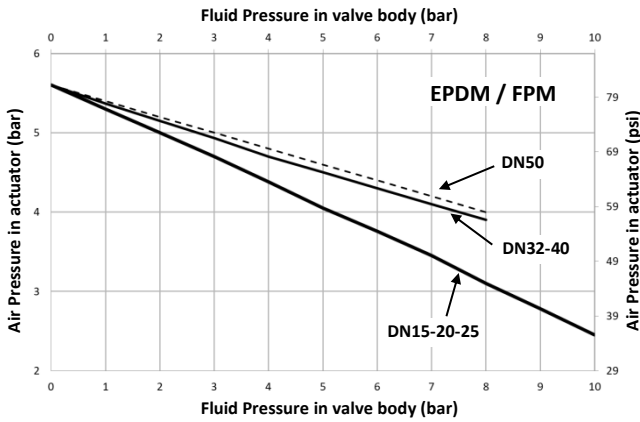
Les descriptions et caractéristiques figurant sur ce document sont données uniquement à titre d'information et non d'engagement contractuel. SAFI se réserve le droit d'effectuer sans préavis, toute modification.
SAFI has a policy of continuously developing its product range and the above data is subject to change without prior notification.

Die Beschreibungen und Daten, die sich auf diesem Dokument befinden, sind rein informativ und unverbindlich. SAFI behält sich vor, ohne Vorankündigung Änderungen vorzunehmen, die als technisch notwendig erachtet werden.
Las descripciones y características que figuran en este documento son indicativas. En ningún caso son contractuales. SAFI se reserva el derecho sin previo aviso de efectuar cualquier modificación.

NORMALLY CLOSE (NC) VERSION

REQUIRED AIR PRESSURE FOR THE VALVE TO BE FULLY OPEN ACCORDING TO THE LINE PRESSURE

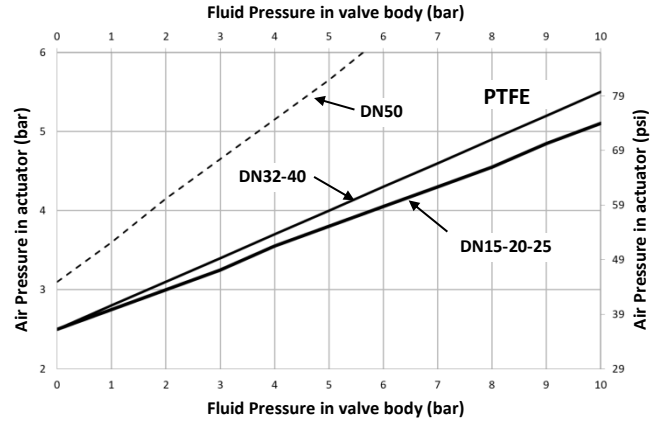
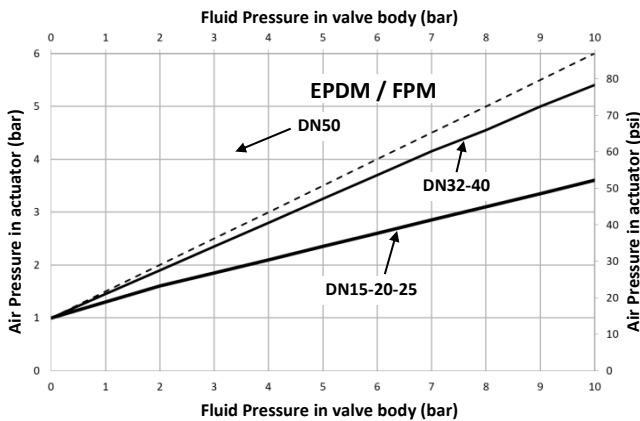
*MAX ALLOWED OPERATING PRESSURE for the actuator = 7 bars



NORMALLY OPEN (NO) VERSION

REQUIRED AIR PRESSURE FOR THE VALVE TO BE FULLY OPEN ACCORDING TO THE LINE PRESSURE

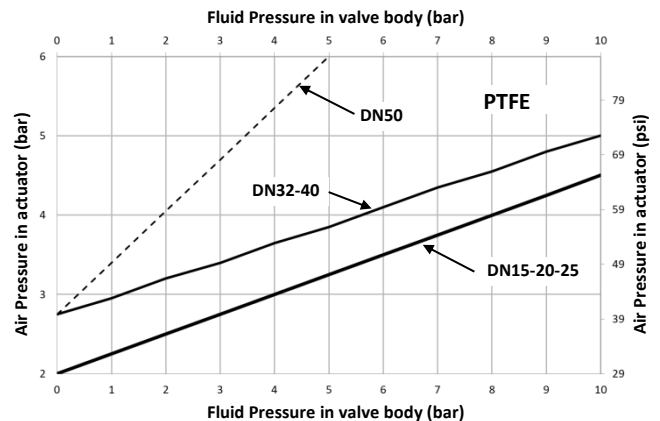
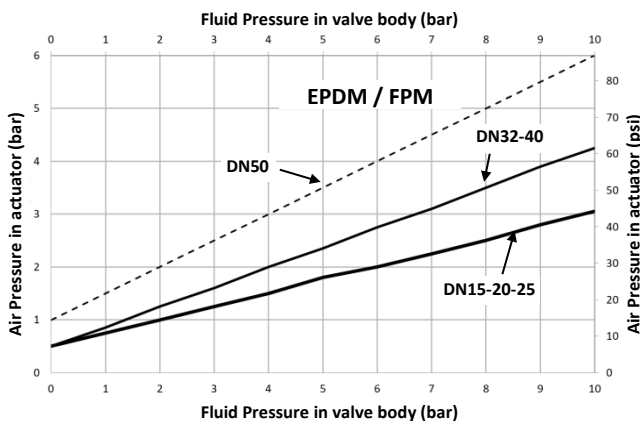
*MAX ALLOWED OPERATING PRESSURE for the actuator = 7 bars



DOUBLE ACTING (DA) VERSION

REQUIRED AIR PRESSURE FOR THE VALVE TO BE FULLY OPEN ACCORDING TO THE LINE PRESSURE

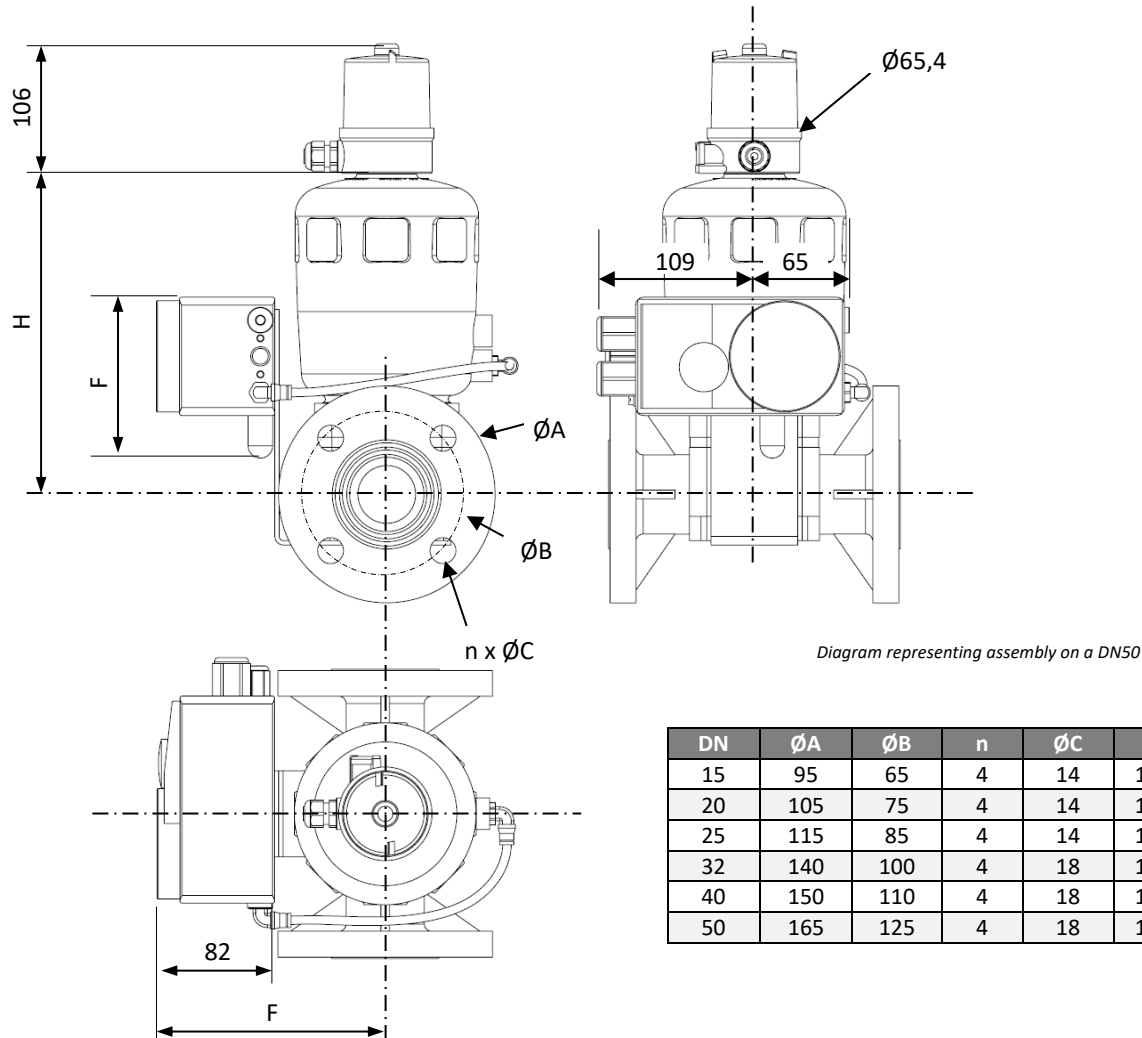
*MAX ALLOWED OPERATING PRESSURE for the actuator = 7 bars



Les descriptions et caractéristiques figurant sur ce document sont données uniquement à titre d'information et non d'engagement contractuel. SAFI se réserve le droit d'effectuer sans préavis, toute modification. SAFI has a policy of continuously developing its product range and the above data is subject to change without prior notification.

Die Beschreibungen und Daten, die sich auf diesem Dokument befinden, sind rein informativ und unverbindlich. SAFI behält sich vor, ohne Vorankündigung Änderungen vorzunehmen, die als technisch notwendig erachtet werden. Las descripciones y características que figuran en este documento son indicativas. En ningún caso son contractuales. SAFI se reserva el derecho sin previo aviso de efectuar cualquier modificación.

OPTION: LIMIT SWITCH BOX & POSITIONER



DN	ØA	ØB	n	ØC	F	H
15	95	65	4	14	150	163
20	105	75	4	14	150	163
25	115	85	4	14	150	163
32	140	100	4	18	160	222
40	150	110	4	18	160	222
50	165	125	4	18	172	269

Limit switch box :

- Same switchbox with different switch types (mechanical or inductive).
- The PCB (Printed Circuit Board) is equipped with inductive limit switches with indicator light showing closed valve.
- The switchbox has M16 x 1.5 cable glands (cable Ø 5 to 7 mm).
- 2 sizes of switchbox are available.
- Protection : IP65
- Operating temperature: -10°C to +60°C.

Positioner:

- Operating voltage : 24V DC +/-10%
- Input control signal (regulation of position or process): 4-20 mA; (0-20 mA by software).
- Weight: 2 kg approx. (4.4 lb).
- Protection : IP 65.
- Operating temperature: 0 à 60°C (32 to 140°F).

Connections and others features:

Electric

- Voltage supply : 24 VDC +/-10%.
- Power consumption : < 10 W.
- Connection: Clamping ring 0, 14- 1,5 mm², 1 grommet M12*1,5 (cable Ø3 - 6,5mm).

Pneumatic

- Air type: Filtered compressed air, with or without oil.
- Air pressure: 3-6 bars depending on the valve type.
- Connection : Threaded G 1/4".

OPTION: LOCKING SYSTEM

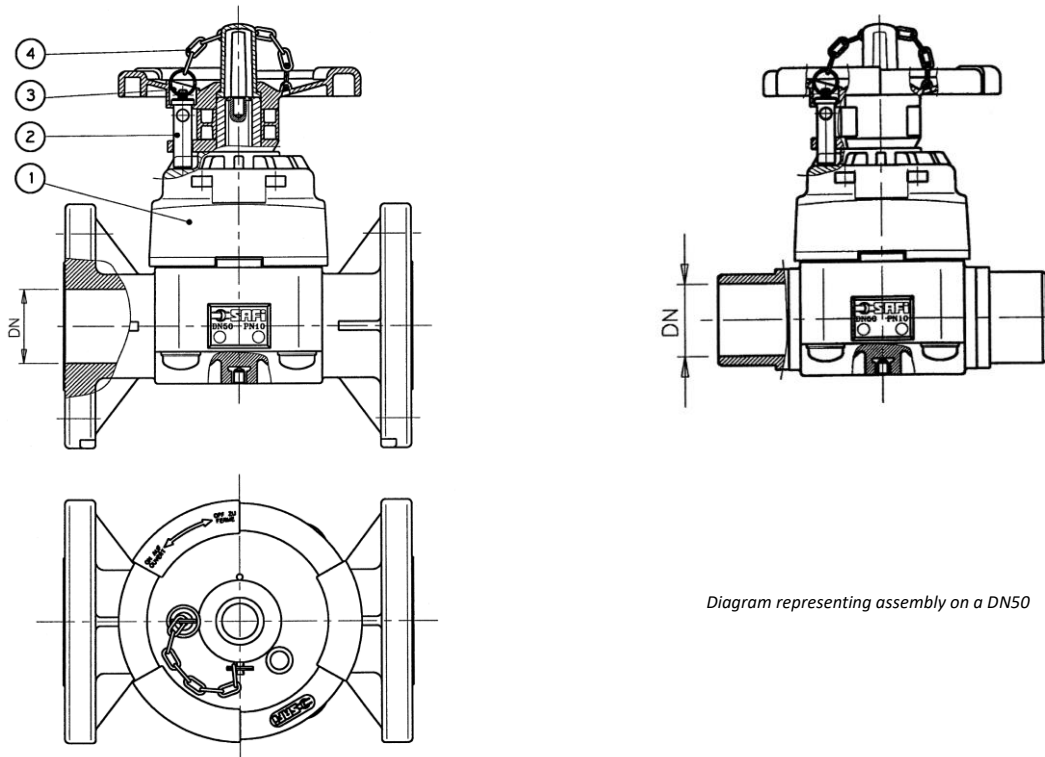


Diagram representing assembly on a DN50

ITEM	N°	DESCRIPTION	MATERIAL	PRODUCT CODE					
				DN15	DN20	DN25	DN32	DN40	DN50
1	1	Diaphragm valve DN15 to DN50	PVC-U	2300 Series					
2	1	Locking Stem*	SS 304	2150-04A				2150-05A	
3	2	Clamp ring	SS 304	2006-08J					
4	1	Chain	PE	2006-09A					
2+3+4		Locking kit	-	2150-04AA				2150-05AA	

*For a padlock wire with a diameter of 7mm

Locking system in SS 316: Contact us.

OTHER AVAILABLE OPTIONS

- Extended handle
- Limit switch box with inductive or mechanical switches.
- Electrical feedback signal; only one position detected.
- External magnetic inductive position feedback.
- Stroke limit device to set position when open, exclusive for a normally closed valve.
- Stroke limit device upper and lower stroke limitation with manual over-ride for both open and closed position and visual position indicator.
- SS Namur base.
- Manual over-ride with visual position indicator, exclusive for a normally closed valve.

Contact us, for more information on the Available Options.

DETERMINING A PRODUCT CODE

TYPE	MATERIAL	SPECIFICATION		DN	Fitting (Inlet)	Connection (Outlet)	Diaphragm
2 = Diaphragm valve	10 = PP-H 20 = PVDF 30 = PVC-U	0 = Manual 7 = Pneumatic DA 8 = Pneumatic NO 9 = Pneumatic NC	-	00 = DN15 01 = DN20 02 = DN25 03 = DN32 04 = DN40 05 = DN50	B = PVC-U DIN Metric plain socket C = Metric plain socket (same material as body) F = Flanges with drilling in accordance with EN 1092-1 PN10/PN16 (DIN) G = Flanges with drilling in accordance with EN1759-1/ASME B16.5 Class 150 (ANSI) Z = Metric spigot (same material as body)	B = PVC-U DIN Metric plain socket C = Metric plain socket (same material as body) F = Flanges with drilling in accordance with EN 1092-1 PN10/PN16 (DIN) G = Flanges with drilling in accordance with EN1759-1/ASME B16.5 Class 150 (ANSI) Z = Metric spigot (same material as body)	E = EPDM Z = FPM (SAFKM5) P = PTFE DIAPHRAGM WITH EPDM BACKING

Example: 2300-05BBE

2	30	0	-	05	B	B	E
Diaphragm Valve	PVC-U	Manual	-	DN50	Double union, PVC-U metric socket	Double union, PVC-U metric socket	EPDM

Example: Diaphragm Valve + LOCKING SYSTEM: 2300-05BBE + 2150-05AA

2300-05BBE	+	2150-05AA
PVC-U Manual Diaphragm valve DN50 Double union, PVC-U metric socket EPDM	+	LOCKING SYSTEM for a DN50

Example: Diaphragm valve + PNEUMATIC ACTUATOR, SINGLE ACTING, NORMALLY CLOSED: 2309-05BBE

2	30	9	-	05	B	B	E
Diaphragm Valve	PVC-U	Pneumatic NC	-	DN50	Double union, PVC-U metric socket	Double union, PVC-U metric socket	EPDM