

## SERIES 86

### SOLENOID VALVE PILOT OPERATED 2/2 WAY NORMALLY CLOSED

*Elettrovalvola 2/2 vie, normalmente chiusa, servo comandata*



#### HIGHLIGHTS

- 2/2 way pilot operated N.C
- 0.3 – 10 bar
- DN 10-75 mm
- Connection 3/8" – 3"
- Seals/Tenuta: NBR – EPDM – FKM
- Air – Water – Light Oils
- Stainless steel core tube
- 3 pole connector IP65 included - UNI ISO 4400 (DIN 43650A)



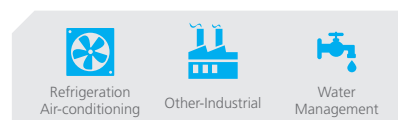
#### PRODUCT DESCRIPTION

Solenoid valve 2/2 way, normally closed, pilot operated. Available with kit for water hammer damped. These solenoid valves are used for various fluids and in a wide variety of applications. Valve supplied with three pole connector IP65 - UNI ISO 4400 (DIN 43650A).



#### DESCRIZIONE PRODOTTO

*Elettrovalvola servocomandata, 2/2 vie, normalmente chiusa. Versione disponibile con chiusura lenta anti-colpo d'ariete. Queste valvole sono utilizzabili con diversi fluidi e in una grande varietà di applicazioni. Elettrovalvola fornita con connettore tripolare IP65 - UNI ISO 4400 (DIN 43650A).*



#### GENERAL FEATURES / CARATTERISTICHE GENERALI

Body material / Materiale corpo	Brass		
Seal material / Materiale di tenuta	EPDM	NBR	FKM
Fluid Temp. °C / Temp. fluido °C	130°C	90°C	150°C
Tube material / Materiale tubo	Stainless steel		
Ambient temp. / Temp. ambiente	80°C		
Working fluids / Applicazioni Fluidi	Water, Air, Light Oils		
Electrical connect. / Connes. elettrica	6,3 x 0,8 fast-on terminal - UNI ISO 4400		
Insulation class / Classe di isolamento	H		
Min. Differential working pressure Pressione minima di esercizio	0.3 bar		
Coil voltage / Voltaggio	220-230 VAC 50-60Hz	100-120 VAC 60Hz	12-24 VDC
Coil Power / Potenza bobina	17 VA	22 VA	16 W
Ambient temp. / Temp. ambiente	80°C	80°C	80°C
Approvals / Approvazioni	CE; VDE	CE; UL	CE

#### SPECIFICATIONS / CARATTERISTICHE

CONNECTION	ORIFICE Ø (mm)	KV m³/h	M.O.P.D. (bar)		DIMENSIONS (mm)			CODE
			AC	DC	A	B	C	
G 3/8	12	2.10	10	10	61	89	48	8613
G 1/2	12	2.10	10	10	61	89	48	8614
G 3/4	20	5.70	10	10	87	101	69	8615
G 1	25	9.60	10	10	100	106	80	8616
G 1.1/4	32	22.00	10	10	131	122	112	8617
G 1.1/2	39	27.00	10	10	146	128	128	8618
G 2	51	35.00	10	10	174	145	146	8619
G 2.1/2	65	63.00	10	10	245	180	184	8620
G 3	75	83.00	10	10	250	190	184	8621
NPT 3/8	12	2.10	10	10	61	89	48	8623
NPT 1/2	12	2.10	10	10	69	89	48	8624
NPT 3/4	20	5.70	10	10	87	101	69	8625
NPT 1	25	9.60	10	10	108	106	80	8626

#### HYDRAULIC CONNECTION

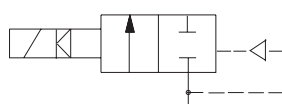
##### 2/2 WAY NC

IN/OUT

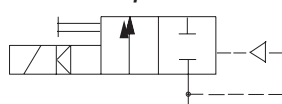
IN/OUT

8613-8614-8615-8616-8623  
8624-8625-8626

8617-8618-8619-8620- 8621



Special execution  
Esecuzione speciale



Manual override / Comando manuale

