

3/4" VALVES



SCREW CONNECTION AE1818B With Pilot group

The classic 90° valve with female thread



PRODUCT CERTIFICATIONS

STANDARD



OPZIONALI



VALVE TECHNICAL FEATURES

Features		Values
Out		3/4" Gas
In		3/4" Gas
Working Pressure		1,5-8 bar
Standard Temperature Range		-40 °C ; +100 °C
High Range Temperature		-20 °C ; +200 °C
Kv		13 m ³ /h
Weight		0.46 kg
Protection Level		IP65

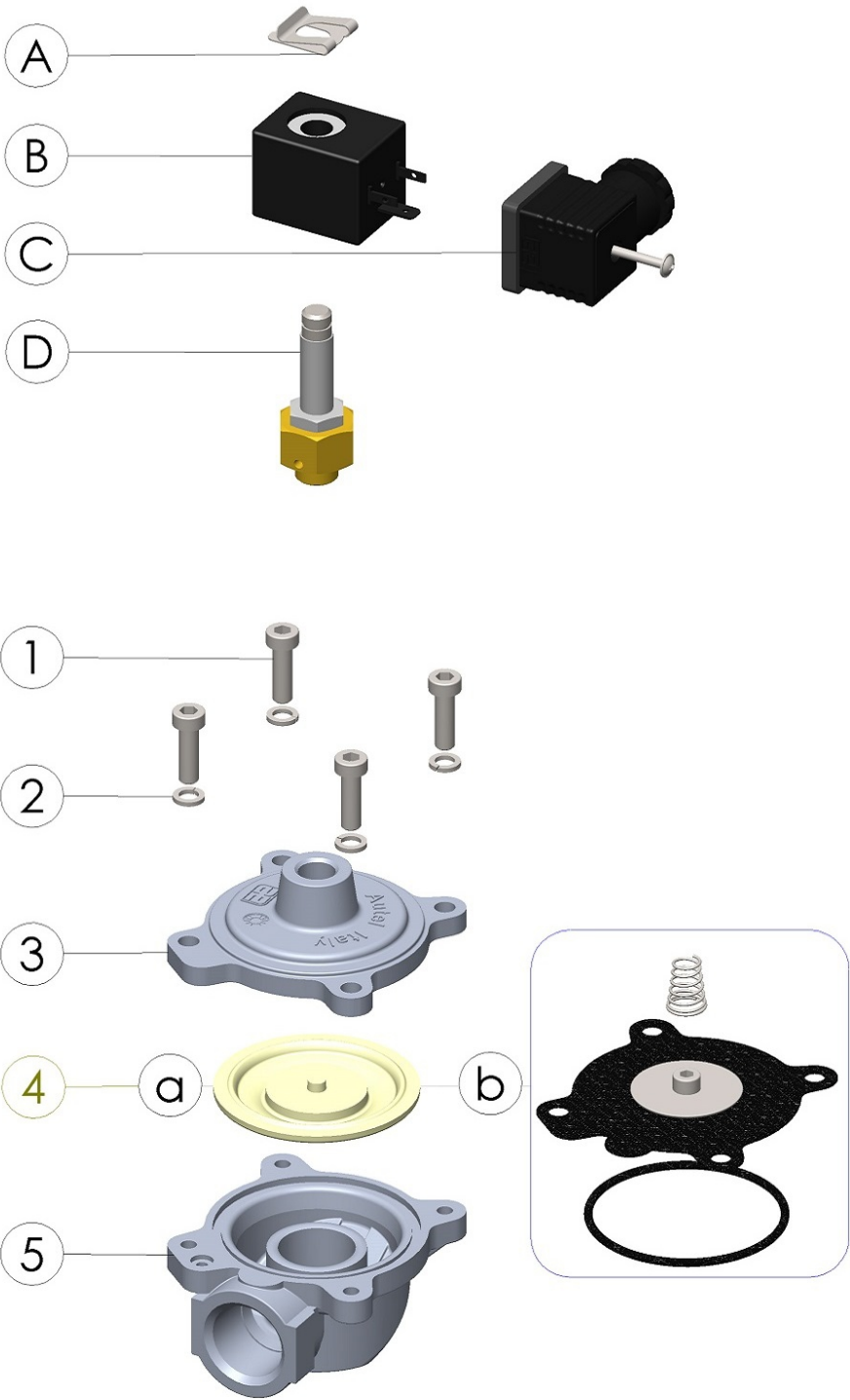
VALVE TECHNICAL FEATURES

Features		Values
Air quality classes (ISO 8573-1)	For Solid	2
	For Water with T > +3°C	4
	For Water with -20°C < T < +3°C	3
	For Water with -40°C < T < -20°C	2
	For Oil	1

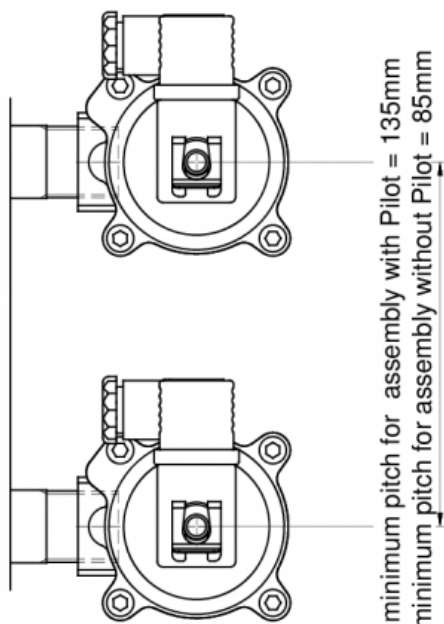
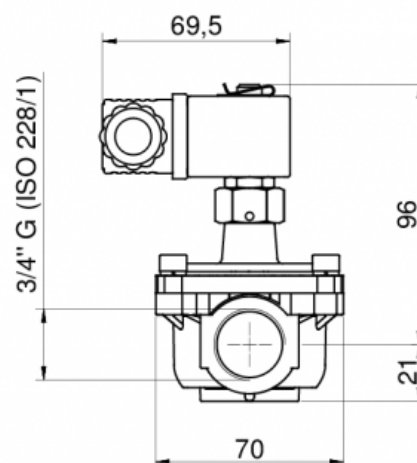
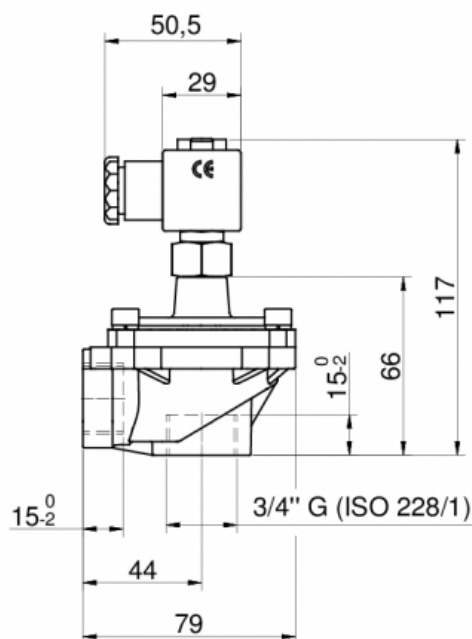
PARTS LIST

No.	Description	Material
A	Clip	CS Galvanized
B	Coil	PA
C	Connector	PA + NBR
D	Pilot	SS + Brass
1	Screw M6	SS
2	Washer	SS
3	Cover 3/4"	Die Cast Alu
4a	STD Diaphragm 3/4"	TPE
4b	HT Diaphragm 3/4" Kit	VITON+PTFE
5	Body 3/4" Screw	Die Cast Alu

Immagine



DIMENSIONAL LAYOUT



CONSUMPTION GRAPHS

