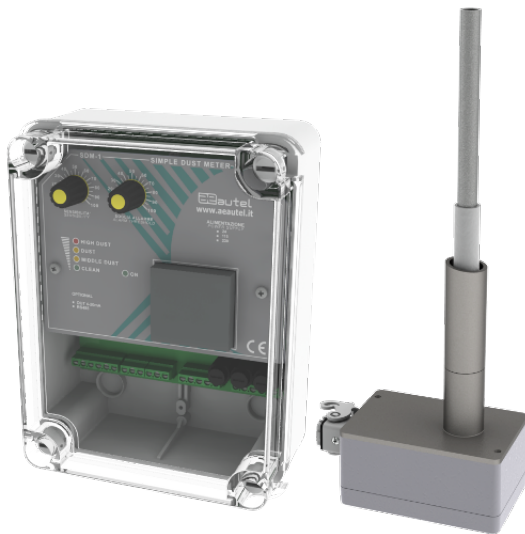


## PATENTED SOLUTION

### *RP-04 + SDM-1*

*Dust monitoring with a 4-level led indicator.*



The RP-04 represents the top of the line as regards our dust emission monitoring systems. The probe has a high sensitivity (monitors up to 0.1 mg / m<sup>3</sup>) and is equipped with a sophisticated system of self-compensation of the offset in the measurement caused by dirt upon the probe.

With a microprocessor, in fact, the amount of dust deposited on the electrode (which creates a constant impedance) is constantly controlled and therefore not considered in the measurement of continuous emission. The advantages are that besides having a precise measurement even in conditions of wet powders, it is possible to perform the operations of cleaning and maintenance with less frequency than a normal probe.

The SDM-1 is an instrument able to measure and display the dustiness via a LED bar. There are two relay outputs (free contacts) to signal the dust level alarms. The activation of each of the 2 relays is displayed by LEDs on the front panel of the instrument. The LED bar on the front panel shows the instantaneous values of dust according to a graduated scale.

If connected to a properly configured Autel controller (ECO-NET or ECOSERIAL), it is possible to detect the position of a broken bag.

### PRODUCT CERTIFICATIONS

STANDARD



## TECHNICAL SPECIFICATIONS

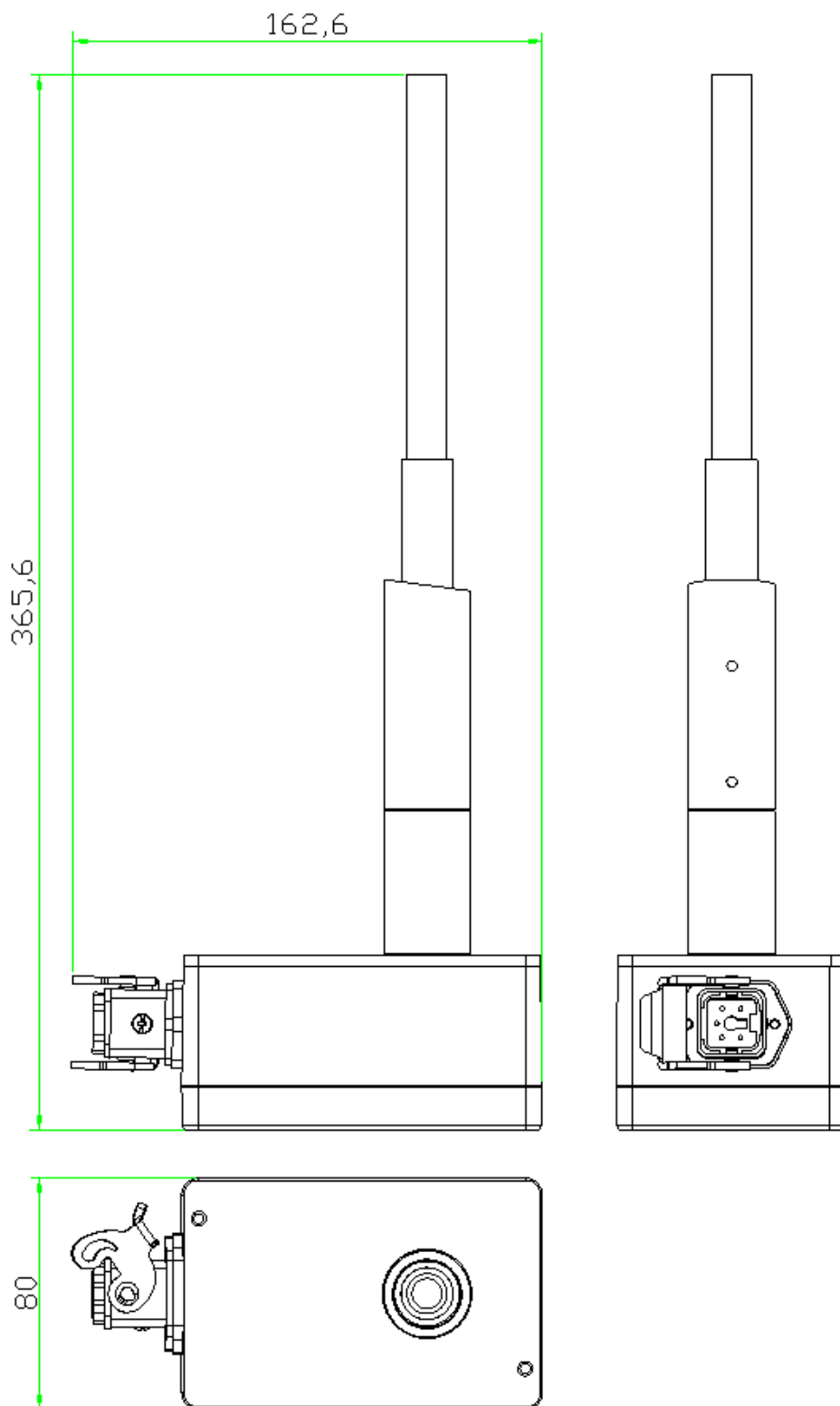
Main Features	Features	Values
Dimensions	External Dimensions ( L x H x W mm )	125x80x60 (RP04) 148x195x80(SDM-1)
	Weight (kg)	1,25 (SDM-1)
Protection	Protection Level (standard)	IP65 (RP-04) IP56 (SDM-1)
Temperature	Working Temperature (°C)	-10... +60
Power Supply	Power Supply Range (standard)	24/115/230Vac 50-60Hz (SDM-1)
	Power Consumption	10VA
Display	Led	5
Outputs	Relay Outputs (nr)	2
	Relay Output Power	10A/250Vac, 10A/30Vdc
	4-20mA Output	optional


**TECHNICAL SPECIFICATIONS**

Main Features	Features	Values
Controls	Rotary Switches (nr)	2
Application	Probe	RP04
	Viewer/Power Pack	SDM-1



DIMENSIONAL LAY-OUT





DIMENSIONAL LAY-OUT 2

