

HEADER TANKS WITH INTEGRATED VALVES

HEADER TANK Ø 14"

3" 1/2 INTEGRATED VALVE

With pilot

Revolutionary cleaning concept



TRIMEC

Revolutionary cleaning concept, performance and a reduction of air consumption at the same time, working pressure from 1 to 4 bar, minimum pitch 170mm for 3" valves, sonic valve cleaning effect. 40% filter bags surface cleaner for bags > 10m.

PRODUCT CERTIFICATIONS

STANDARD



OPZIONALI



TANK TECHNICAL FEATURES

Features	Valori
Header Design Pressure	Max 8 Bar
Carbon Steel PED Design Temperature	-20°C ; +70°C
Stainless Steel Header PED Temperature	-40°C ; +100°C
Header Standard Color For Carbon Steel	RAL 5012

VALVE TECHNICAL FEATURES

Features	Values
Out	Pipe 3"1/2
Working Pressure	1,5-4Bar (Max)

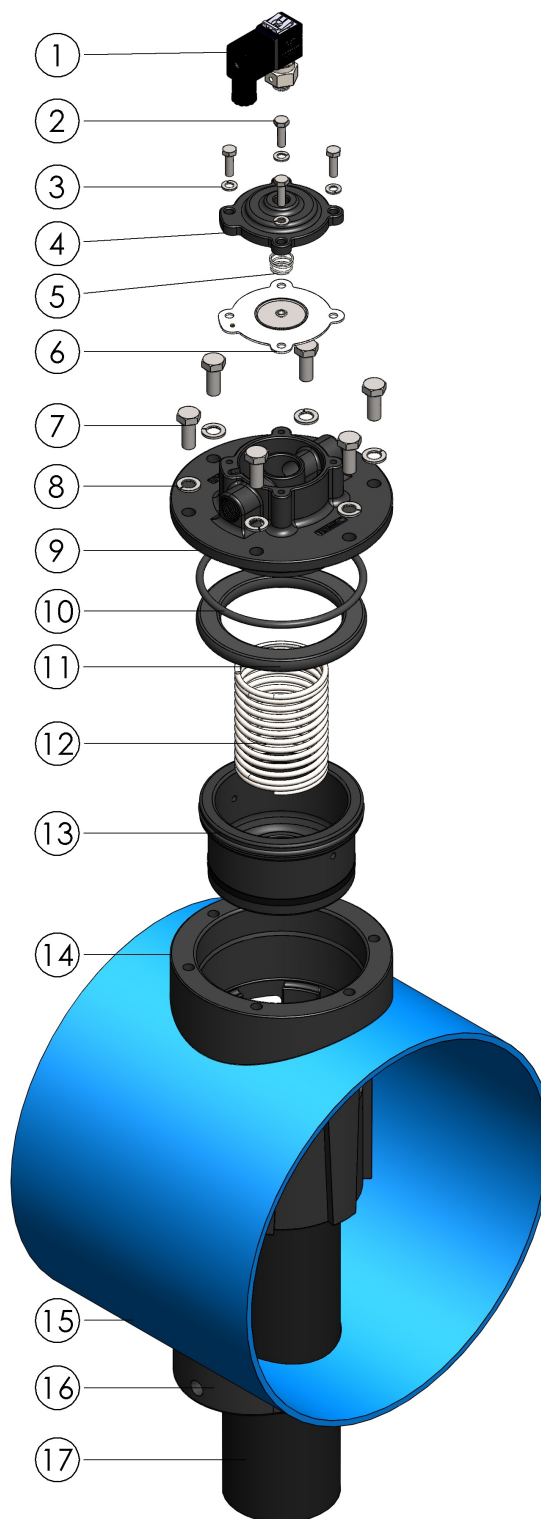

VALVE TECHNICAL FEATURES

Features		Values
Standard Temperature Range		-20 C° +70C°
High Range Temperature		-20 C° +200C°
Weight		10kg
Protection Level		IP65
Air quality classes (ISO 8573-1)	For Solid	2
	For Water with T > +3°C	4
	For Water with -20°C < T < +3°C	3
	For Water with -40°C < T < -20°C	2
	For Oil	1


PARTS LIST

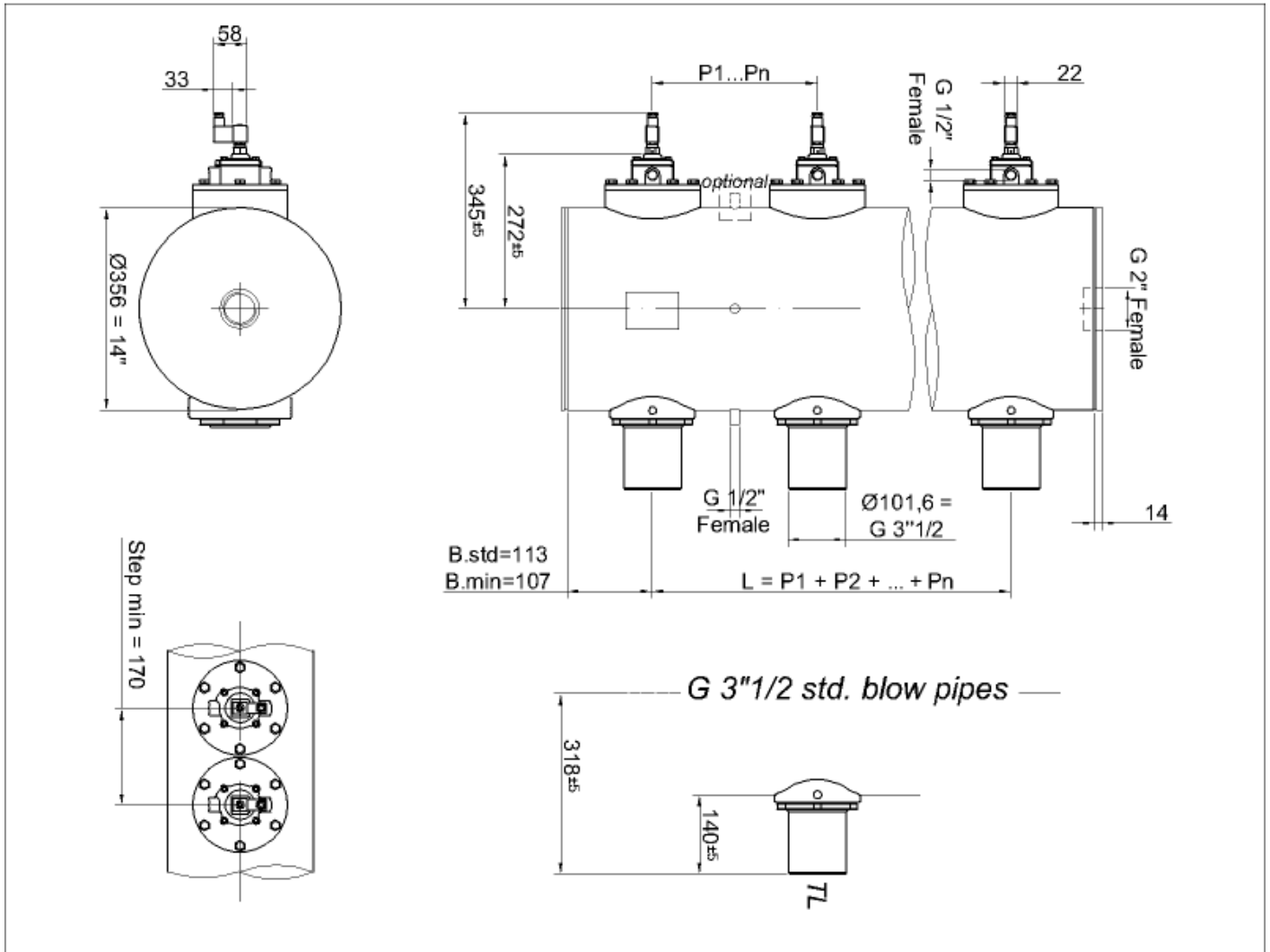
No.	Description	Material
A	v1	v1
1	Pilot Group with Coil	
2	Screw M6	SS
3	Washer Grover M6	SS
4	Cover 1"	Die Cast Alu
5	Spring 1"	SS
6	TPU VITON (Higt T)	Small Diaphragm
7	Screw M10	SS
8	Washer Grover M10	SS
9	SPV Cover	Die Cast Alu
10	O-Ring	NBR
11	End Stroke	NBR
12	SPV Spring	SS
13	Piston	Die Cast Alu
14	Body Valve 3"1/2	Die Cast Alu
15	Tank 14"	CS/SS
16	Saddle	Die Cast Alu
17	Blow Pipe 3"1/2	CS/SS

Immagine





DIMENSIONAL LAYOUT





CONSUMPTION GRAPHS

