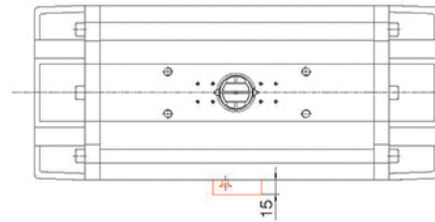
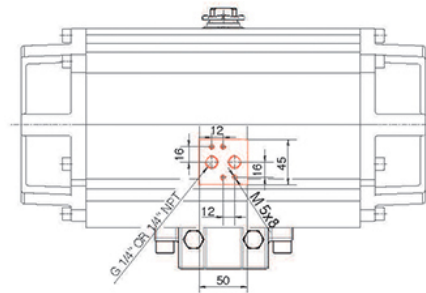


BASI PER MONTAGGIO ELETTROVALVOLE - ADAPTER PLATES FOR SOLENOID VALVES

BASE NAMUR - NAMUR PLATE



BASE NAMUR - NAMUR PLATE

Materiale base Plate material	Alluminio Aluminium
Trattamento Treatment	Ossidazione dura Hard anodization
Materiale guarnizione Seal material	Viton Viton
Materiale viti Screw material	Acciaio inox cl. A2 Stainless steel cl. A2

CODICE - CODE	CODICE - CODE
RI3136	Base namur 1/4" gas Namur plate 1/4" gas
RI3137	Base namur 1/4" NPT Namur plate 1/4" NPT

ATTENZIONE: Per attuatore 32 e 270, solo se necessario montare l'elettrovalvola parallela all'attuatore. Articolo non disponibile per mod. 330.

ATTENTION: Namur adapter for size 32-270 only if solenoid valve is request to be fitted parallel to the actuator. Not available for size 330.