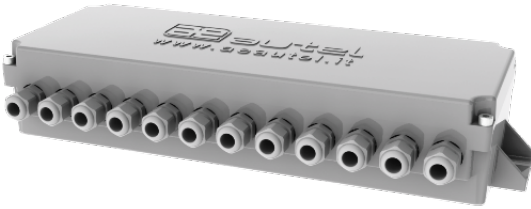


SERIAL SOLUTION

ADVANCED SERIAL SYSTEM

RPC

The ideal solution for the management of cells filters.



The RPC box represents our way to control solenoid valves in cell filters and to manage the limit switches in the opening and closing section of every single cell. Each RPC commands the opening and closing of a single cell.

RPC can be managed via RS485 with Modbus protocol using the ECOSERIAL-3 controller, or a PLC. The maximum number of cells controllable with the ECOSERIAL-3 are 32, 64 with a PLC.



PRODUCT CERTIFICATIONS

STANDARD



TECHNICAL SPECIFICATIONS

Main Features	Features	Values
Dimensions	External Dimensions (L x H x W mm)	346x134x72
Protection	Protection Level (standard)	IP65
Temperature	Working Temperature (°C)	-10... +60 standard version, -20... +60 with one heater, -40... +60 with two heater
Power Supply	Power Supply Range (standard)	90-270Vac
	Power Consumption	90Vac 9VA, 270Vac 18.9VA
Inputs	Digital Inputs (nr)	8 opto-isolated inputs
	Analog Input	ok
Outputs	Relay Outputs (nr)	4
	Relay Output Power	2A 30Vdc/250Vac resistive
Functions	Cyclic Management	ok
Serial Ports	RS485	ok


TECHNICAL SPECIFICATIONS

Main Features	Features	Values
System	Type	SLAVE
	Maximum number of coil	12
	Type of control driver	RS485

DIMENSIONAL LAY-OUT

