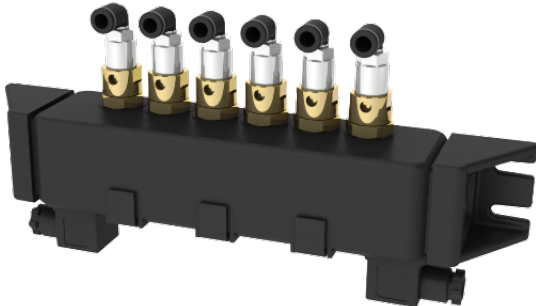


## SERIAL SOLUTION

### TWO WIRE SYSTEM

#### RPBid

*Our traditional, plastic pilot box from 2 to 6 outputs.*



The REMOTE PILOT BOX (RPBiD) are plastic pilot boxes to be used with our SERIAL SOLUTIONS. It can control from 2 to 6 pneumatic valves. The electronics inside is resin bonded and protected from attack by external agents. Thanks to the reduced size, the tool is extremely robust, compact and easily adaptable to any kind of tank. The modularity and versatility pairing with the device ECOSERIAL are the ideal solution for any type of filtration system with a large number of valves, since they eliminate the considerable cost of the electrical connections.



#### PRODUCT CERTIFICATIONS

STANDARD



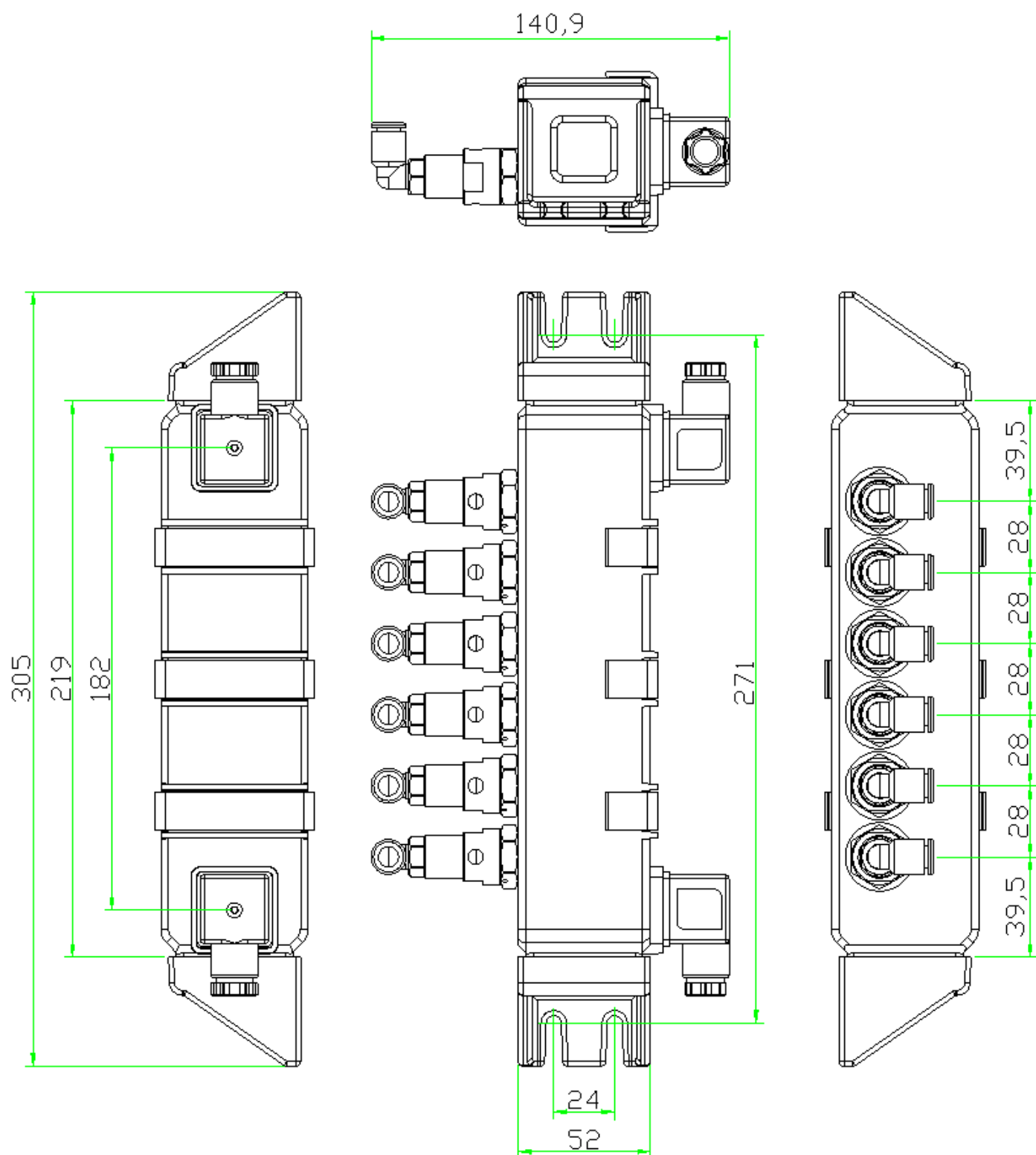
OPZIONALI



#### TECHNICAL SPECIFICATIONS

Main Features	Features	Values
Dimensions	External Dimensions ( L x H x W mm )	305x65x72
Protection	Protection Level (standard)	IP65
Temperature	Working Temperature (°C)	-10... +60
Power Supply	Power Supply Range (standard)	12..30Vdc from MASTER
	Power Consumption	7W
Outputs	Coils Control Voltage	24Vdc
Functions	Cyclic Management	ok
System	Type	SLAVE
	Maximum number of coil	12
	Type of control driver	BUS

**DIMENSIONAL LAY-OUT**





## HOW TO ORDER

### **RPBid- x - EX(optional) - thr - FTk(optional)**

x= 2,3,5,6. Number of electro-valves installed.

EX = ATEX zone 22 (optional)

thr = BSP or NPT ¼" female thread on electro-valve body. (if not specified -> ¼" BSP)

FTk=

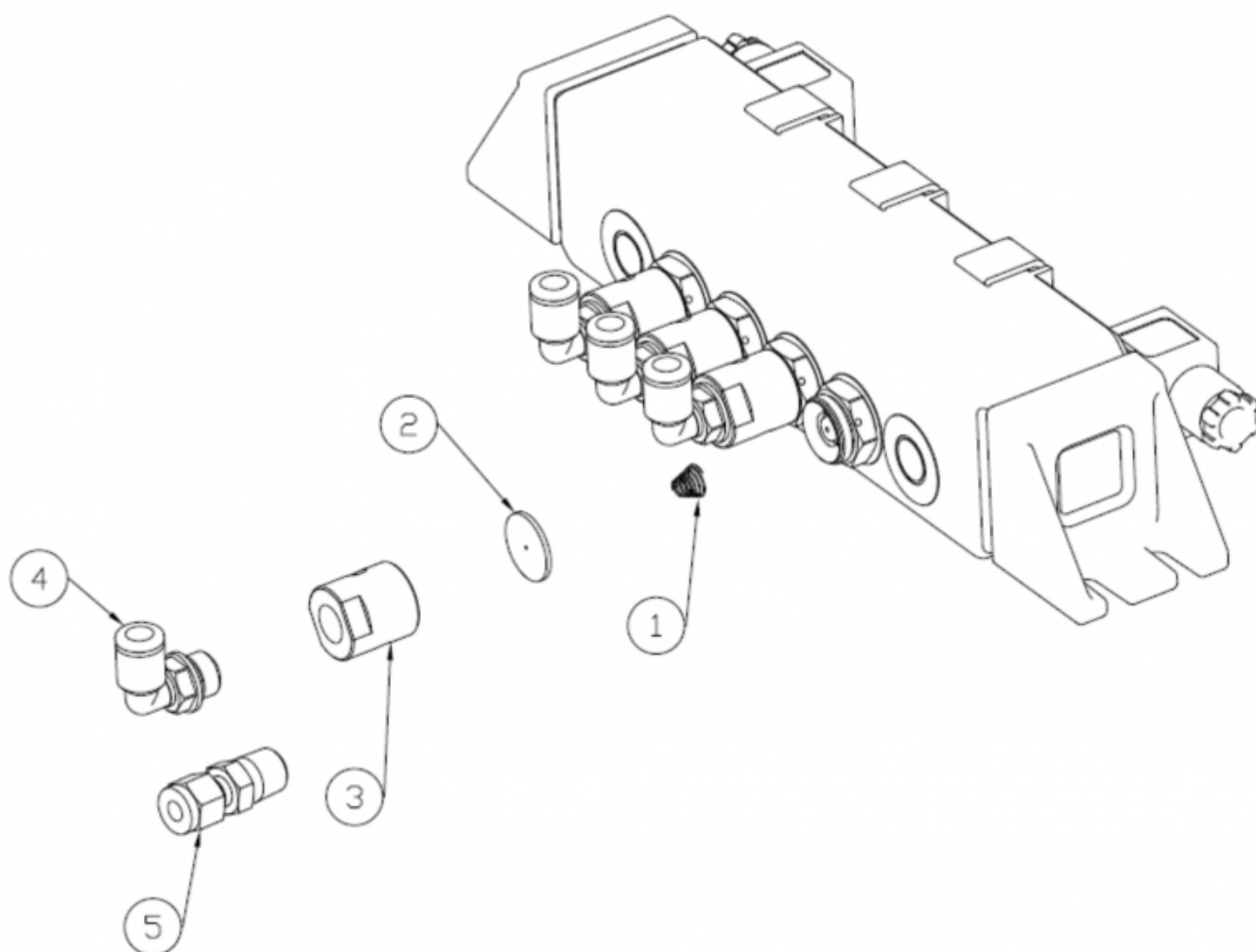
- 0 or not specified: ¼" BSP Elbow fitting for 6 x 8 mm plastic tubing.
- 1: ¼" NPT Elbow fitting for ¼" plastic tubing.
- 3: ¼" NPT Elbow fitting for 6 x 8 mm plastic tubing.
- 4: ¼" NPT Swagelock Fitting for ¼" Stainless steel tubing.
- 5: ¼" BSP Parker Fitting for ¼" Stainless steel tubing.
- 6: ¼" BSP Generic Fitting for ¼" Stainless steel tubing.

Examples 1: RPBid-EX-BSP-FT6 :

RPBid Box with 12 electro-pilots, Atex IECex zone1/21, electrovalve body with NPT thread, ¼" BSP Generic Fitting for ¼" Stainless steel tubing.



## DESCRIPTION



- 1: Electro-valve internal spring.
- 2: Electro-valve internal diaphragm.
- 3: Electro-valve body. Standard with Female BSP 1/4" Thread. Optional with Female NPT 1/4" thread.
- 4: Elbow fitting for tubing to pulse jet valve. Standard BSP 1/4" Thread for 6x8 mm plastic tubing.
- 5: Optional fittings for Stainless steel connection : Swagelock, Parker.

**ELECTRICAL CONNECTION**

